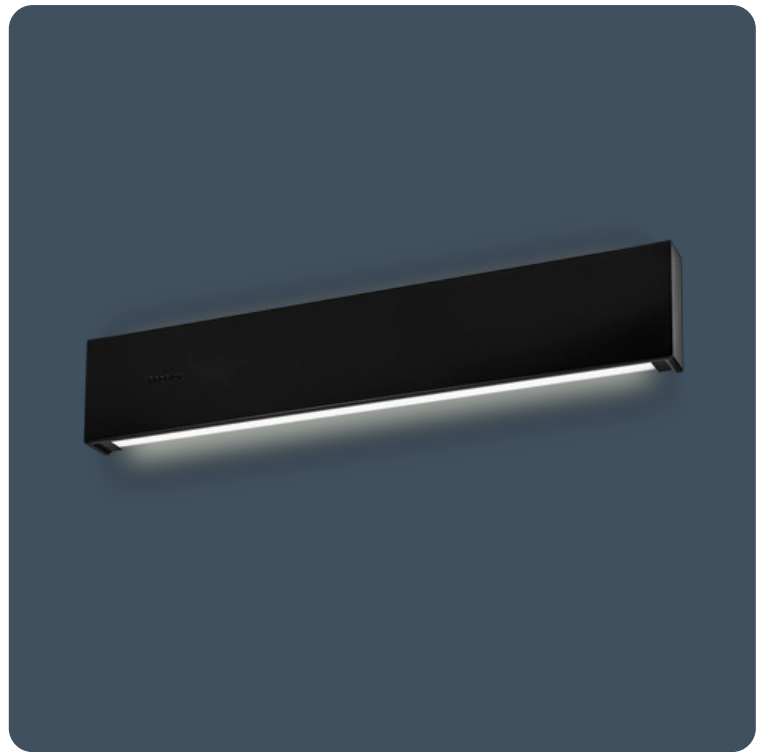


Wall mounted up and downlighters

Wall mounted linear luminaires with upward and downward light component. Steel body finished in either white or black with opal polycarbonate diffusers. Can be mounted vertically as well as horizontally. Kast is ideal for corridors or stairwell applications.

Applications: corridors, stairwells, reception areas, meeting rooms, offices.

- Can be mounted horizontally or vertically
- Integral emergency and SmartScan emergency options
- SmartScan wireless technology removes the need for control cabling. Ideal for retrofit



IP40

IK10

Up to 130 LL/CW

Lighting management

Lighting control system	Dimming (DALI) Non-dimming SmartScan Internal	Emergency system	AutoTest Emergency Non-emergency SmartScan Emergency Standard Emergency
-------------------------	---	------------------	--

Specification

Mounting	Surface	IP rating	IP40
Impact rating	IK10	Max presence detection height	8 m

Lighting

Optic	Opal diffuser	Lumen output	1,455 lm - 2,860 lm
Efficacy	Up to 130 LL/CW		

Emergency data

Emergency lumen output	385 lm	Emergency type	Maintained
Emergency duration	3 hours	Battery specification	Nickel Metal Hydride (NiMH)

Power

LED power	10 W - 20 W	Circuit power	12 W - 22 W
-----------	-------------	---------------	-------------

Construction

Housing	Zinc coated steel body	Finish	Full polyester powder coat
Body colour	Satin black Satin white (RAL9016)	Optical assembly	Fire-retardant polycarbonate diffusers

Installation

Mounting detail	Horizontal or vertical mounting
-----------------	---------------------------------

LED characteristics

CRI	80+	Colour temperature	4000 K
Rated life (hours)	67 K - L80/B10	LED protection	LUX Guard
Driver efficiency	>80%	Replaceable light source	Yes
Power factor	>0.95	MacAdam ellipse	3 Step

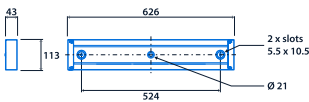
Compliance

UKCA	Yes	CE	Yes
Energy efficiency class	This product contains a light source of energy efficiency class B	SmartScan wireless standards compliance	Europe: EN 300 220-1 V2.4.1/ EN 301 489-3 V1.6.1. Australasia: ACMA 2014 Radio Communication Standard 2014. Thorlux Patented Wireless Technology - GB2575724

LED lifetimes

L70/B10	100,000 h	L80/B10	67,000 h
L90/B10	34,000 h	60 kWh value (TM-21)	L82/B10

Dimensions



View the range



Information is correct as of 29-Oct-2024, however must not be interpreted as a guarantee of individual product performance and/or characteristics. We reserve the right to alter specifications and designs without prior notice.