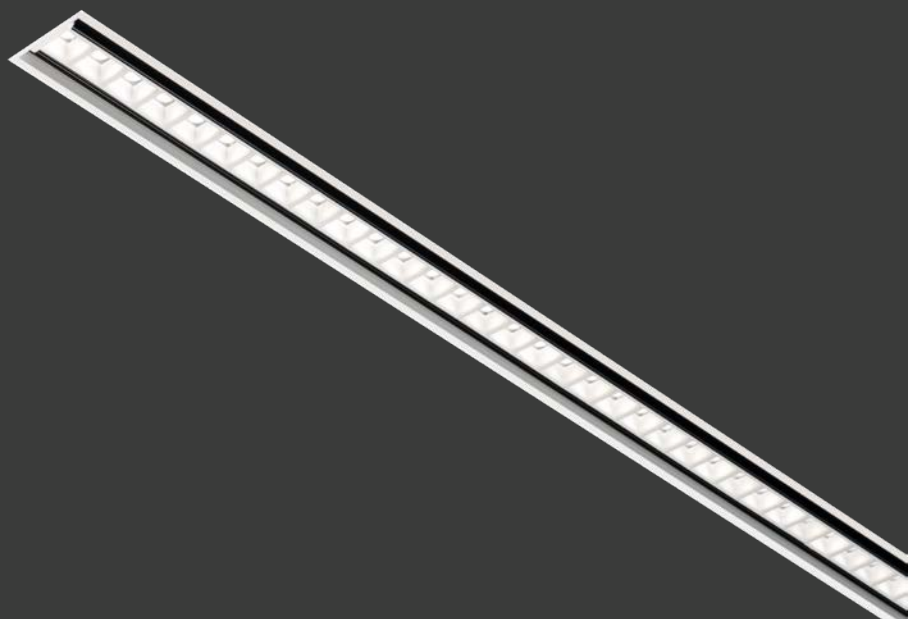


FLEXBAR RECESSED INDIVIDUAL



SLIMLINE, LOW GLARE
LINEAR LUMINAIRES



SPECIFICATION

- Extruded aluminium body and light engine
- White (RAL9016) or black (RAL9005) finishes available
- Custom optical system combining a reflector and optical lens for each LED
- Magnetic clip-in light engine
- Supplied fitted with 2m supply lead and adjustable recessing ceiling brackets
- Black 'invisible' light source, metallised low glare and white reflector options
- Low glare optics for EN12464-1 / LG7 (<math><1500\text{cd/m}^2 @ 65^\circ</math>) when using the metallised or black reflector
- Fitted with 4000K LEDs

SmartScan Configurations



Find out more at www.thorlux.com/smartsan

LED CHARACTERISTICS

CRI	80
COLOUR TEMPERATURE	4000K
RATED LIFE (HOURS)	100K - L80/B10
PROTECTION	LUX GUARD
DRIVER EFFICIENCY	>81%
REPLACEABLE	YES
POWER FACTOR	>0.9
LL/CW	160.5

For LED characteristics explanation see www.thorlux.com/led-guide

WEIGHTS

VERSION	APPROX. kg
1400	4.2
2800	7.6

EMERGENCY

Add 0.3kg to weight listed.

SMARTSCAN

Add 0.1kg to weight listed.

SMARTSCAN EMERGENCY

Add 0.4kg to weight listed.

LUMINAIRE CONFIGURATOR

EMERGENCY TYPE ♦	PRODUCT CODE	WATTAGE	LENGTH	VARIANT	REFLECTOR	CONTROL TYPE
1400mm Individual						
W SmartScan*	FXR Flexbar Recessed	08 08W	M 1400	V Individual	W White	S SmartScan
T AutoTest**		14 14W			M Metallised	A Dimming (DALI)
E Emergency**		20 20W			B Black	L Non-dimming
		31 31W				
2800mm Individual						
W SmartScan*	FXR Flexbar Recessed	16 16W	L 2800	V Individual	W White	S SmartScan
T AutoTest**		27 27W			M Metallised	A Dimming (DALI)
E Emergency**		39 39W			B Black	L Non-dimming
		63 63W				

E.g. WFXR08MVMS

W SmartScan FXR Flexbar Recessed 08 08W M 1400 V Individual M Metallised S SmartScan

♦ Optional; leave blank if emergency is not required

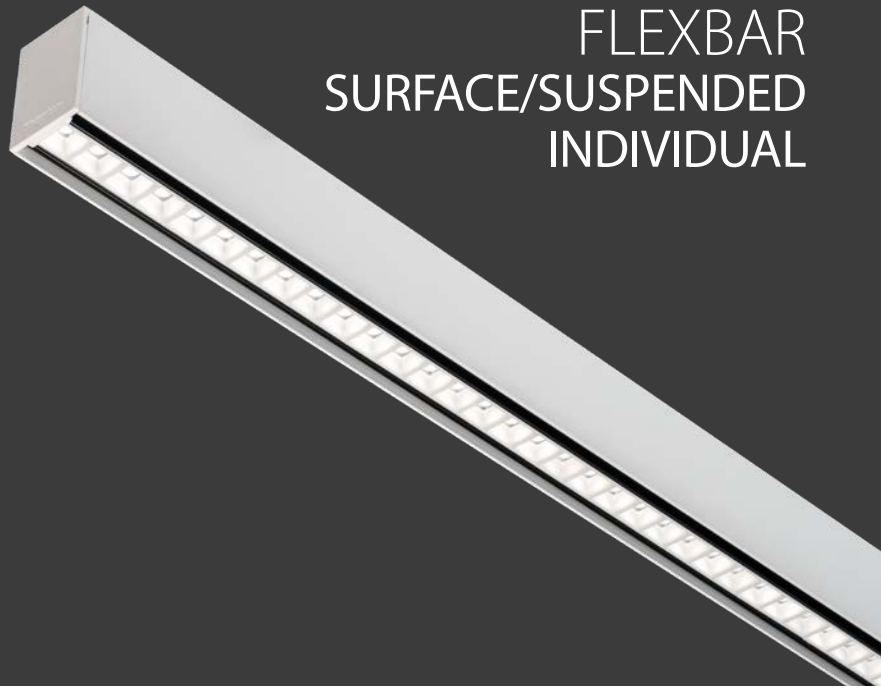
* Only available with S control type

** Not available with S control type

Note: White body as standard. For black body versions, suffix catalogue number with B6.

Technical information and finishing components from page 7.

FLEXBAR SURFACE/SUSPENDED INDIVIDUAL



SLIMLINE, LOW GLARE
LINEAR LUMINAIRES



SPECIFICATION

- Extruded aluminium body and light engine
- White (RAL9016) or black (RAL9005) finishes available
- Custom optical system combining a reflector and optical lens for each LED
- Magnetic clip-in light engine
- Versions with optional uplight
- Supplied with easily adjustable 3.5m wire suspensions and surface mounting kit, and fitted with 3m supply lead
- Black 'invisible' light source, metallised low glare and white reflector options
- Low glare optics for EN12464-1 / LG7 (<math><1500\text{cd}/\text{m}^2</math> @ 65°) when using the metallised or black reflector
- Fitted with 4000K LEDs

SmartScan Configurations



Find out more at www.thorlux.com/smartsan

LED CHARACTERISTICS

CRI	80
COLOUR TEMPERATURE	4000K
RATED LIFE (HOURS)	100K - L80/B10
PROTECTION	LUX GUARD
DRIVER EFFICIENCY	>81%
REPLACEABLE	YES
POWER FACTOR	>0.9
LL/CW	160.5

For LED characteristics explanation see www.thorlux.com/led-guide

WEIGHTS

VERSION	APPROX. kg
1400	4.0 ●
2800	7.2 ▲

EMERGENCY

Add 0.3kg to weight listed.

SMARTSCAN

Add 0.1kg to weight listed.

SMARTSCAN EMERGENCY

Add 0.4kg to weight listed.

UPLIGHT

Add ● 0.2kg or ▲ 0.4kg to weight.

LUMINAIRE CONFIGURATOR

EMERGENCY TYPE ♦	PRODUCT CODE	WATTAGE	LENGTH	VARIANT	UPLIGHT	REFLECTOR	CONTROL TYPE
1400mm Individual							
W SmartScan*	FR Flexbar	08 08W	M 1400	V Individual	X No uplight	W White	S SmartScan
T AutoTest**		14 14W			U Uplight	M Metallised	A Dimming (DALI)
E Emergency**		20 20W				B Black	L Non-dimming
		31 31W					
2800mm Individual							
W SmartScan*	FR Flexbar	16 16W	L 2800	V Individual	X No uplight	W White	S SmartScan
T AutoTest**		27 27W			U Uplight	M Metallised	A Dimming (DALI)
E Emergency**		39 39W				B Black	L Non-dimming
		63 63W					

E.g. WFR08MVUMS

W SmartScan FR Flexbar 08 08W M 1400 V Individual U Uplight M Metallised S SmartScan

♦ Optional; leave blank if emergency is not required

* Only available with S control type

** Not available with S control type

Note: White body as standard. For black body versions, suffix catalogue number with B6.

Technical information from page 7.

FLEXBAR RECESSED CONTINUOUS

SLIMLINE, LOW GLARE
LINEAR LUMINAIRES



SPECIFICATION

- Extruded aluminium body and light engine
- White (RAL9016) or black (RAL9005) finishes available
- Custom optical system combining a reflector and optical lens for each LED
- Integral through wiring system with plug and socket connectors
- Magnetic clip-in light engine
- Supplied with adjustable recessing ceiling brackets
- Primary luminaire supplied with end kit and fitted with 2m supply lead
- Black 'invisible' light source, metallised low glare or white reflector options
- Low glare optics for EN12464-1 / LG7 (<1500cd/m² @ 65°) when using the metallised or black reflector
- Fitted with 4000K LEDs

SmartScan Configurations



Find out more at www.thorlux.com/smartsan

LED CHARACTERISTICS

CRI	80
COLOUR TEMPERATURE	4000K
RATED LIFE (HOURS)	100K - L80/B10
PROTECTION	LUX GUARD
DRIVER EFFICIENCY	>81%
REPLACEABLE	YES
POWER FACTOR	>0.9
LL/CW	160.5

For LED characteristics explanation see www.thorlux.com/led-guide

WEIGHTS

VERSION	APPROX. kg
1400	4.4
2800	7.8

EMERGENCY

Add 0.3kg to weight listed.

SMARTSCAN

Add 0.1kg to weight listed.

SMARTSCAN EMERGENCY

Add 0.4kg to weight listed.

LUMINAIRE CONFIGURATOR

	EMERGENCY TYPE ♦	PRODUCT CODE	WATTAGE	LENGTH	VARIANT	REFLECTOR	CONTROL TYPE
Primary Straight	2800mm Continuous						
	W SmartScan*	FXR Flexbar Recessed	16 16W	L 2800	P Primary	W White	S SmartScan
	T AutoTest**		27 27W			M Metallised	A Dimming (DALI)
	E Emergency**		39 39W			B Black	L Non-dimming
			63 63W				
Secondary Straight	1400mm Continuous						
	W SmartScan*	FXR Flexbar Recessed	08 08W	M 1400	S Secondary	W White	S SmartScan
	T AutoTest**		14 14W			M Metallised	A Dimming (DALI)
	E Emergency**		20 20W			B Black	L Non-dimming
			31 31W				
	2800mm Continuous						
	W SmartScan*	FXR Flexbar Recessed	16 16W	L 2800	S Secondary	W White	S SmartScan
	T AutoTest**		27 27W			M Metallised	A Dimming (DALI)
	E Emergency**		39 39W			B Black	L Non-dimming
			63 63W				

E.g. WFXR16LPWS

W SmartScan	FXR Flexbar Recessed	16 16W	L 2800	P Primary	W White	S SmartScan
-------------	----------------------	--------	--------	-----------	---------	-------------

♦ Optional; leave blank if emergency is not required * Only available with S control type

** Not available with S control type

Note: White body as standard. For black body versions, suffix catalogue number with B6.

Technical information and finishing components from page 7.

FLEXBAR SURFACE/SUSPENDED CONTINUOUS

SLIMLINE, LOW GLARE
LINEAR LUMINAIRES



SPECIFICATION

- Extruded aluminium body and light engine
- White (RAL9016) or black (RAL9005) finishes available
- Custom optical system combining a reflector and optical lens for each LED
- Integral through wiring system with plug and socket connectors
- Magnetic clip-in light engine
- Versions with optional uplight
- Suitable for wire suspending or surface mounting (see finishing components on page 9)
- Primary luminaire supplied with end kit and fitted with 3m supply lead
- Black 'invisible' light source, metallised low glare and white reflector options
- Low glare optics for EN12464-1 / LG7 (<1500cd/m² @ 65°) when using the metallised or black reflector
- Fitted with 4000K LEDs

SmartScan Configurations



Find out more at www.thorlux.com/smartsan

LED CHARACTERISTICS

CRI	80
COLOUR TEMPERATURE	4000K
RATED LIFE (HOURS)	100K - L80/B10
PROTECTION	LUX GUARD
DRIVER EFFICIENCY	>81%
REPLACEABLE	YES
POWER FACTOR	>0.9
LL/CW	160.5

For LED characteristics explanation see www.thorlux.com/led-guide

WEIGHTS

VERSION	APPROX. kg
1400 Secondary	3.5 ●
2800 Primary	7.3 ▲
2800 Secondary	6.7 ▲

EMERGENCY

Add 0.3kg to weight listed.

SMARTSCAN

Add 0.1kg to weight listed.

SMARTSCAN EMERGENCY

Add 0.4kg to weight listed.

UPLIGHT

Add ● 0.2kg or ▲ 0.4kg to weight.

LUMINAIRE CONFIGURATOR

	EMERGENCY TYPE ◆	PRODUCT CODE	WATTAGE	LENGTH	VARIANT	UPLIGHT	REFLECTOR	CONTROL TYPE
Primary Straight	2800mm Continuous							
	W SmartScan*	FR Flexbar	16 16W	L 2800	P Primary	X No uplight	W White	S SmartScan
	T AutoTest**		27 27W			U Uplight	M Metallised	A Dimming (DALI)
	E Emergency**		39 39W				B Black	L Non-dimming
			63 63W					
Secondary Straight	1400mm Continuous							
	W SmartScan*	FR Flexbar	08 08W	M 1400	S Secondary	X No uplight	W White	S SmartScan
	T AutoTest**		14 14W			U Uplight	M Metallised	A Dimming (DALI)
	E Emergency**		20 20W				B Black	L Non-dimming
			31 31W					
	2800mm Continuous							
	W SmartScan*	FR Flexbar	16 16W	L 2800	S Secondary	X No uplight	W White	S SmartScan
	T AutoTest**		27 27W			U Uplight	M Metallised	A Dimming (DALI)
	E Emergency**		39 39W				B Black	L Non-dimming
			63 63W					

E.g. WFR16LPXWS

W SmartScan	FR Flexbar	16 16W	L 2800	P Primary	X No uplight	W White	S SmartScan
-------------	------------	--------	--------	-----------	--------------	---------	-------------

◆ Optional; leave blank if emergency is not required

* Only available with S control type

** Not available with S control type

Note: White body as standard. For black body versions, suffix catalogue number with B6.

Technical information and finishing components from page 7.

FLEXBAR RECESSED CORNER JOINTS



SLIMLINE, LOW GLARE
LINEAR LUMINAIRES



SPECIFICATION

- Extruded aluminium body and light engine
- White (RAL9016) or black (RAL9005) finishes available
- Custom optical system combining a reflector and optical lens for each LED
- Integral through wiring system with plug and socket connectors
- Magnetic clip-in light engine
- Supplied with adjustable recessing ceiling brackets
- Primary luminaire supplied with end kit and fitted with 2m supply lead
- Black 'invisible' light source, metallised low glare or white reflector options
- Low glare optics for EN12464-1 / LG7 (<math><1500\text{cd}/\text{m}^2 @ 65^\circ</math>) when using the metallised or black reflector
- Fitted with 4000K LEDs

SmartScan Configurations



Find out more at www.thorlux.com/smartscan

LED CHARACTERISTICS

CRI	80
COLOUR TEMPERATURE	4000K
RATED LIFE (HOURS)	100K - L80/B10
PROTECTION	LUX GUARD
DRIVER EFFICIENCY	>81%
REPLACEABLE	YES
POWER FACTOR	>0.9
LL/CW	160.5

For LED characteristics explanation see www.thorlux.com/led-guide

WEIGHTS

VERSION	APPROX. kg
CORNER	4.7

SMARTSCAN
Add 0.1kg to weight listed.

LUMINAIRE CONFIGURATOR

PRODUCT CODE	WATTAGE	LENGTH	VARIANT	REFLECTOR	CONTROL TYPE
Primary Corner					
FXR Flexbar Recessed	08 08W	C 850 x 870	PL Primary left corner	W White	S SmartScan
	14 14W		PR Primary right corner	M Metallised	A Dimming (DALI)
	20 20W			B Black	L Non-dimming
	31 31W				
Secondary Corner					
FXR Flexbar Recessed	08 08W	C 850 x 870	SL Secondary left corner	W White	S SmartScan
	14 14W		SR Secondary right corner	M Metallised	A Dimming (DALI)
	20 20W			B Black	L Non-dimming
	31 31W				

E.g. FXR08CPLWS

FXR Flexbar Recessed	08 08W	C 850 x 870	PL Primary left corner	W White	S SmartScan
-----------------------------	---------------	--------------------	-------------------------------	----------------	--------------------

Note: White body as standard. For black body versions, suffix catalogue number with **B6**.

Note: Corners not available with emergency version.

Technical information and finishing components from page 7.

FLEXBAR SURFACE/SUSPENDED CORNER JOINTS

SLIMLINE, LOW GLARE
LINEAR LUMINAIRES



SPECIFICATION

- Extruded aluminium body and light engine
- White (RAL9016) or black (RAL9005) finishes available
- Custom optical system combining a reflector and optical lens for each LED
- Integral through wiring system with plug and socket connectors
- Magnetic clip-in light engine
- Versions with optional uplight
- Suitable for wire suspending or surface mounting (see finishing components on page 9)
- Primary luminaire supplied with end kit and fitted with 3m supply lead
- Black 'invisible' light source, metallised low glare and white reflector options
- Low glare optics for EN12464-1 / LG7 (<math><1500\text{cd}/\text{m}^2 @ 65^\circ</math>) when using the metallised or black reflector
- Fitted with 4000K LEDs

SmartScan Configurations



Find out more at www.thorlux.com/smartsan

LED CHARACTERISTICS

CRI	80
COLOUR TEMPERATURE	4000K
RATED LIFE (HOURS)	100K - L80/B10
PROTECTION	LUX GUARD
DRIVER EFFICIENCY	>81%
REPLACEABLE	YES
POWER FACTOR	>0.9
LL/CW	160.5

For LED characteristics explanation see www.thorlux.com/led-guide

WEIGHTS

VERSION	APPROX. kg
CORNER	4.5
SMARTSCAN	Add 0.1kg to weight listed.
UPLIGHT	Add 0.2kg to weight listed.

LUMINAIRE CONFIGURATOR

PRODUCT CODE	WATTAGE	LENGTH	VARIANT	UPLIGHT	REFLECTOR	CONTROL TYPE
Primary Corner						
FR Flexbar	08 08W	C 850 x 870	PL Primary left corner	X No uplight	W White	S SmartScan
	14 14W		PR Primary right corner	U Uplight	M Metallised	A Dimming (DALI)
	20 20W				B Black	L Non-dimming
	31 31W					
Secondary Corner						
FR Flexbar	08 08W	C 850 x 870	SL Secondary left corner	X No uplight	W White	S SmartScan
	14 14W		SR Secondary right corner	U Uplight	M Metallised	A Dimming (DALI)
	20 20W				B Black	L Non-dimming
	31 31W					

E.g. FR08CPLXWS

FR Flexbar	08 08W	C 850 x 870	PL Primary left corner	X No uplight	W White	S SmartScan
------------	--------	-------------	------------------------	--------------	---------	-------------

Note: White body as standard. For black body versions, suffix catalogue number with **B6**. Note: Corners not available with emergency version.

Technical information and finishing components from page 7.

FLEXBAR



Score:
2.6

This product has been certified as having 'Excellent' circularity in accordance with the LIA/CIBSE Assured Product Verification Scheme.

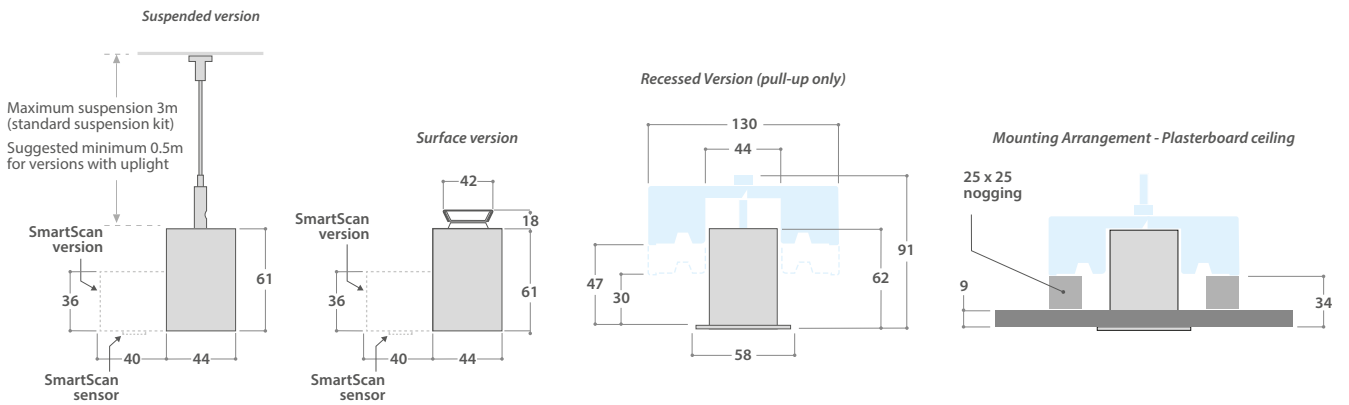
TECHNICAL DATA

100%		Downlight Only 1.4m —		Downlight Only 2.8m —		Downlight Only Corner L	
		LED WATTAGE	LUMEN OUTPUT	LED WATTAGE	LUMEN OUTPUT	LED WATTAGE	LUMEN OUTPUT
WHITE	LED WATTAGE PER METRE	8	1460	16	2920	8	1460
	6	8	1460	16	2920	8	1460
	10	14	2360	27	4720	14	2360
	14	20	3350	39	6700	20	3350
METALLISED	LED WATTAGE PER METRE	8	1525	16	3050	8	1525
	6	8	1525	16	3050	8	1525
	10	14	2470	27	4940	14	2470
	14	20	3505	39	7010	20	3505
BLACK	LED WATTAGE PER METRE	8	1195	16	2390	8	1195
	6	8	1195	16	2390	8	1195
	10	14	1930	27	3860	14	1930
	14	20	2740	39	5480	20	2740
22	31	4165	63	8330	31	4165	

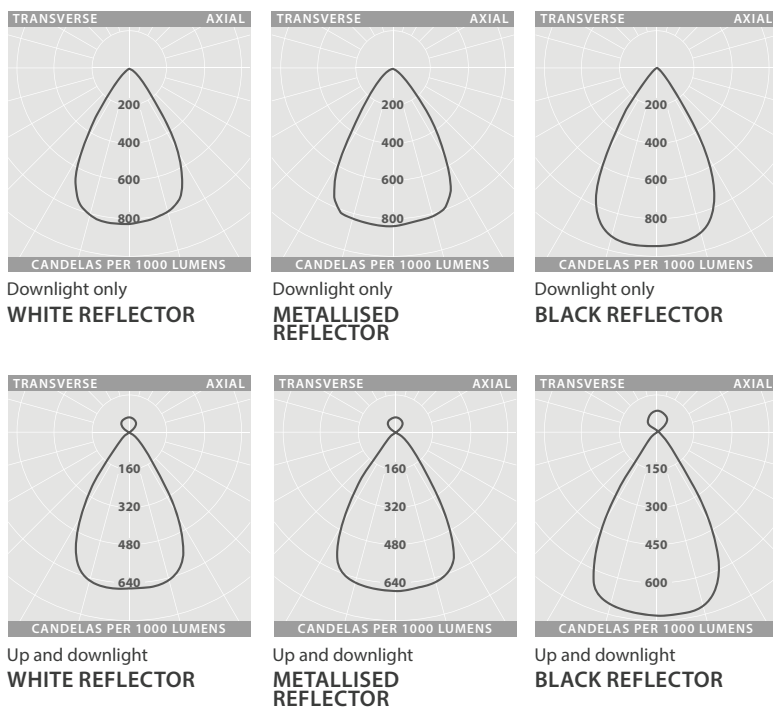
20% 80%		Up and Downlight 1.4m —		Up and Downlight 2.8m —		Up and Downlight Corner L	
		LED WATTAGE	LUMEN OUTPUT	LED WATTAGE	LUMEN OUTPUT	LED WATTAGE	LUMEN OUTPUT
WHITE	LED WATTAGE PER METRE	8	1450	16	2900	8	1450
	6	8	1450	16	2900	8	1450
	10	14	2350	27	4700	14	2350
	14	20	3345	39	6690	20	3345
METALLISED	LED WATTAGE PER METRE	8	1525	16	3050	8	1525
	6	8	1525	16	3050	8	1525
	10	14	2470	27	4940	14	2470
	14	20	3510	39	7020	20	3510
BLACK	LED WATTAGE PER METRE	8	1240	16	2480	8	1240
	6	8	1240	16	2480	8	1240
	10	14	2010	27	4020	14	2010
	14	20	2860	39	5720	20	2860
22	31	4365	63	8730	31	4365	



DIMENSIONS



PHOTOMETRIC GUIDE



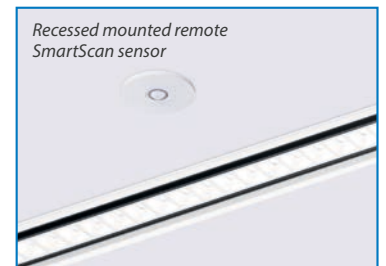
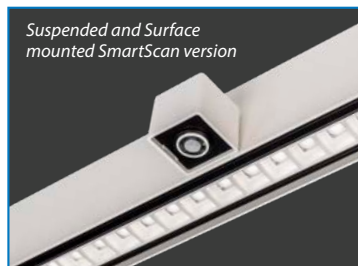
FLEXBAR



FINISHING COMPONENTS

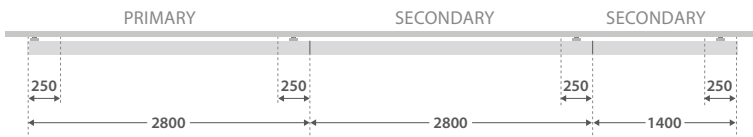
DESCRIPTION	CAT. No.	APPROX. kg
Wire suspension kit (3m length)*	IK 20181	0.05
Surface mounting kit*	IK 20182	0.04
Recessed tethering kit	IK 20274	0.01
Surface wiring tidy - white	LL13361W12	0.40
Surface wiring tidy - black	LL13361B6	0.40

* See fixing location graphics on page 10 for required quantities.



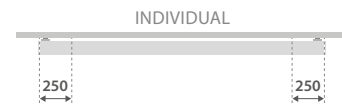
The SmartScan sensor is located centrally along the length of the luminaire which enables wireless grouping if required.

SUSPENDED AND SURFACE MOUNTED CONTINUOUS LUMINAIRE FIXING LOCATIONS



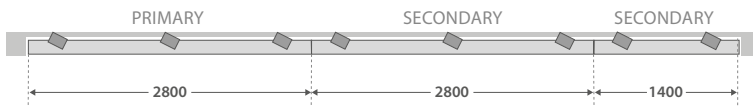
Sliding suspension kits and surface mounting kits should be located a maximum of 250mm either side of joints or from ends.

SUSPENDED AND SURFACE MOUNTED INDIVIDUAL LUMINAIRE FIXING LOCATIONS



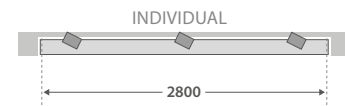
Sliding suspension kits and surface mounting kits should be located a maximum of 250mm from either end.

RECESSED MOUNTED CONTINUOUS LUMINAIRE FIXING LOCATIONS



Continuous recessed version cut-out size: $2800 + 2800 + 1400 + 6^* = 7006 \times 48\text{mm}$
 * = 2 x End Caps

RECESSED MOUNTED INDIVIDUAL LUMINAIRE FIXING LOCATIONS



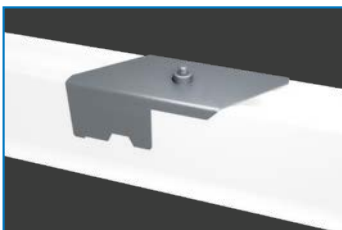
Individual recessed version cut-out size: $2800 + 6^* = 2806 \times 48\text{mm}$
 * = 2 x End Caps

PRIMARY AND SECONDARY LUMINAIRES

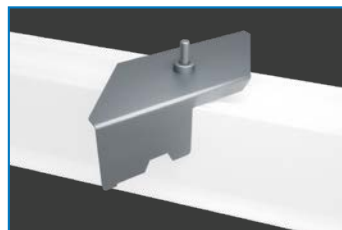


Continuous luminaires should start with a Primary followed by a Secondary luminaire up to a maximum of 12m. A new Primary luminaire must be used with a new electrical connection at 12m intervals.

RECESSED MOUNTED INSTALLATION



1 - Offer up the luminaire into the cut aperture and tighten the screw from below

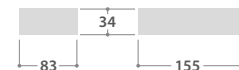


2 - The bracket will rotate against the body and pull the body up to the ceiling

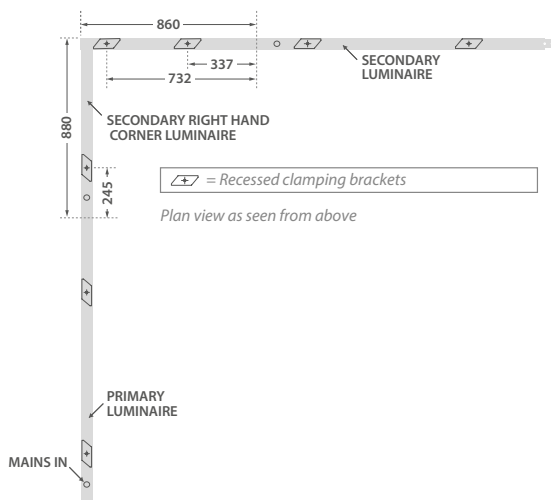
WIRING TIDY



Suitable for use with suspended versions the wiring tidy is a surface mounted, easy connect, wiring box for use on solid ceilings.



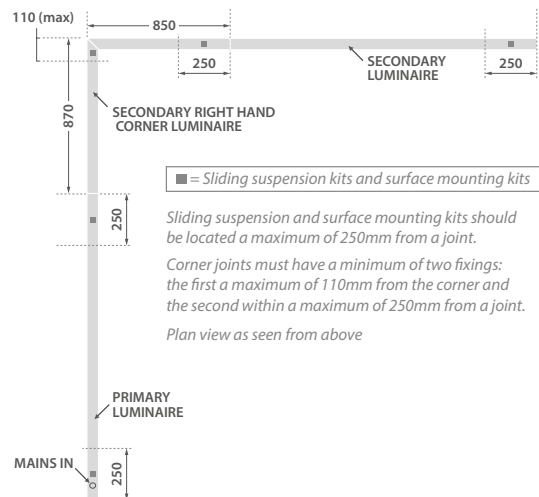
RECESSED CORNER JOINT FIXING LOCATIONS



☒ = Recessed clamping brackets

Plan view as seen from above

SUSPENDED AND SURFACE MOUNTED CORNER JOINT FIXING LOCATIONS



■ = Sliding suspension kits and surface mounting kits

Sliding suspension and surface mounting kits should be located a maximum of 250mm from a joint.

Corner joints must have a minimum of two fixings: the first a maximum of 110mm from the corner and the second within a maximum of 250mm from a joint.

Plan view as seen from above