



# ||| Flexbar

Minimum presence. *Maximum impact.*



EXCLUSIVE distributor  
of Thorlux in Finland

EASY | LED

**TL** Thorlux  
Lighting

Actual size



## Introduction

Flexbar is an elegant, linear luminaire ideal for a wide range of applications such as offices, education, leisure and retail. The high-performance lens technology provides well-controlled low glare lighting for optimum user comfort.

The versatility of Flexbar allows it to be surface mounted, suspended or recessed whilst individual, continuous and corner joints allow designers to be creative with their lighting layouts. Supreme efficiency (160.5LL/CW) and 100,000 hour life ensure Flexbar has the performance to match its elegance.



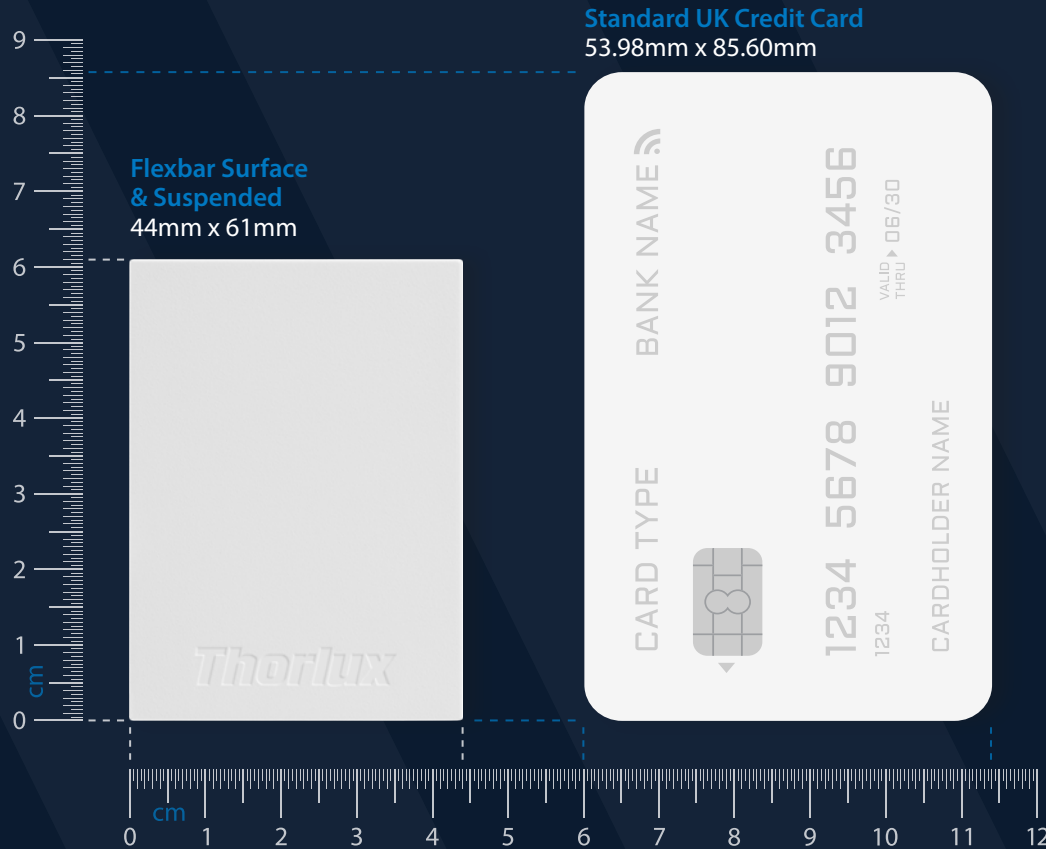
Score:  
2.6

This product has been certified as having 'Excellent' circularity in accordance with the LIA/CIBSE Assured Product Verification Scheme.

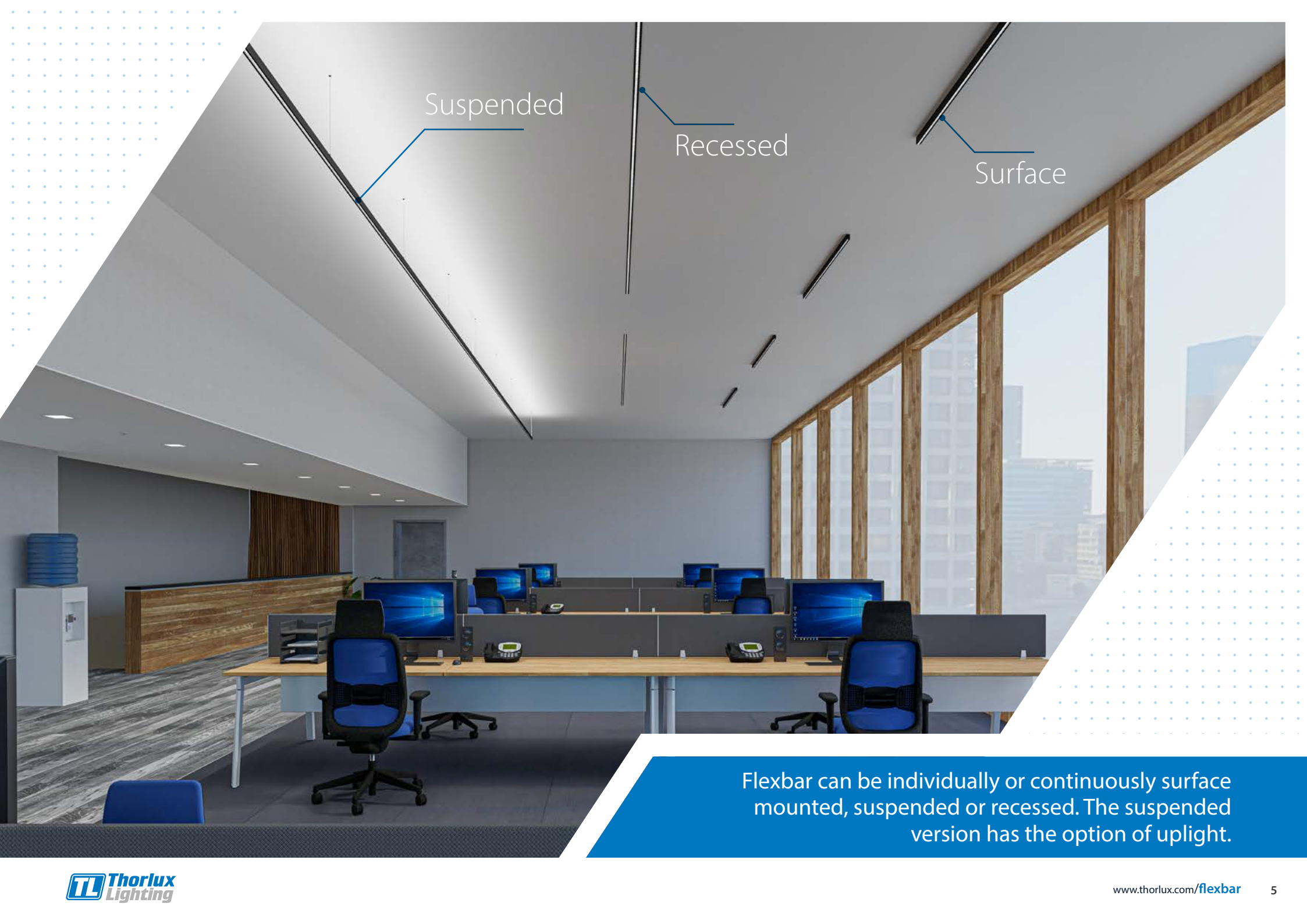


# Slim, sleek & discreet

Flexbar's compact, slim design allows the luminaire to blend into the background without compromising on the features required for a complete lighting solution, including integral lighting controls and emergency lighting.



Examples shown above are to scale



Suspended

Recessed

Surface

Flexbar can be individually or continuously surface mounted, suspended or recessed. The suspended version has the option of uplight.

# The choice is yours

Flexbar is available in a wide range of options giving you control over aesthetics and functionality.

4

Lumen outputs

3

Mounting options

3

Body lengths

3

Reflector options

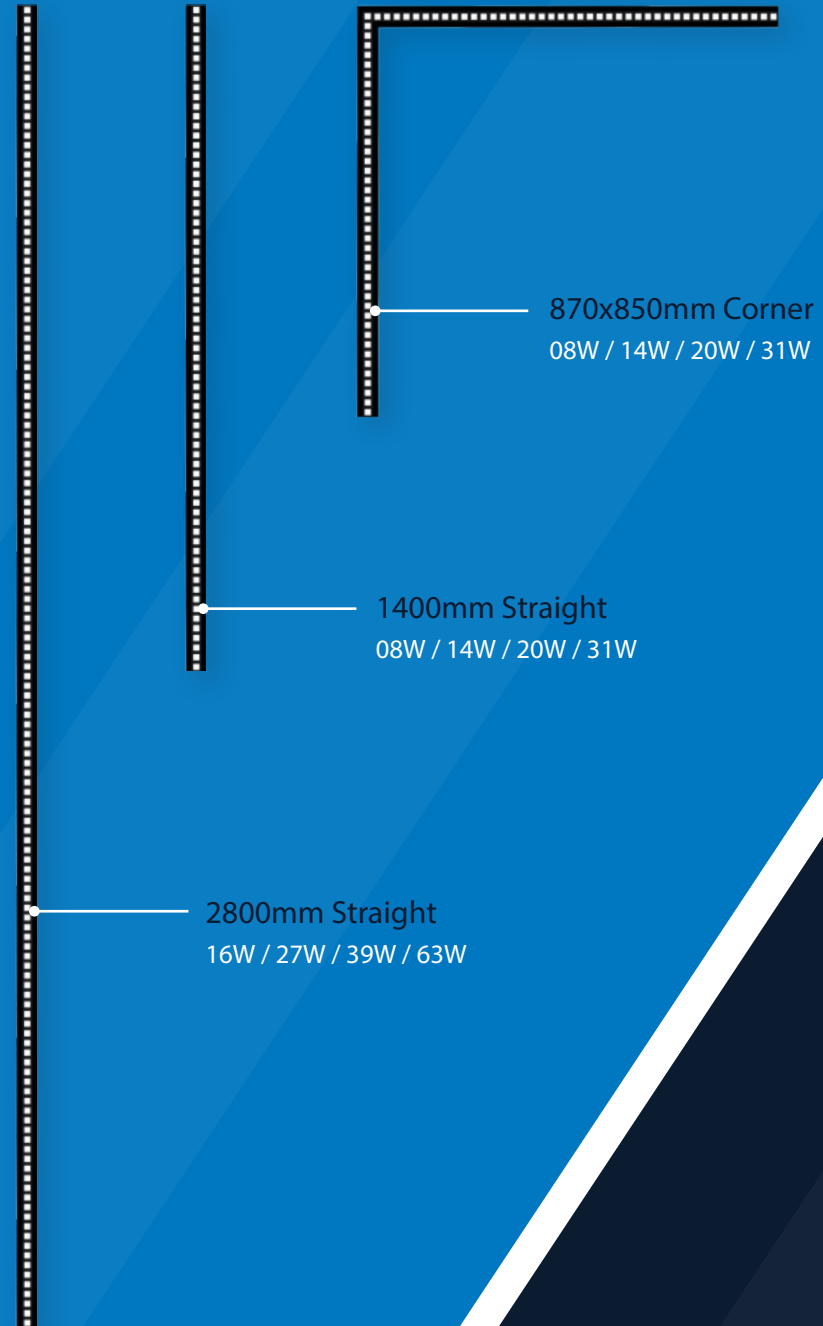
2

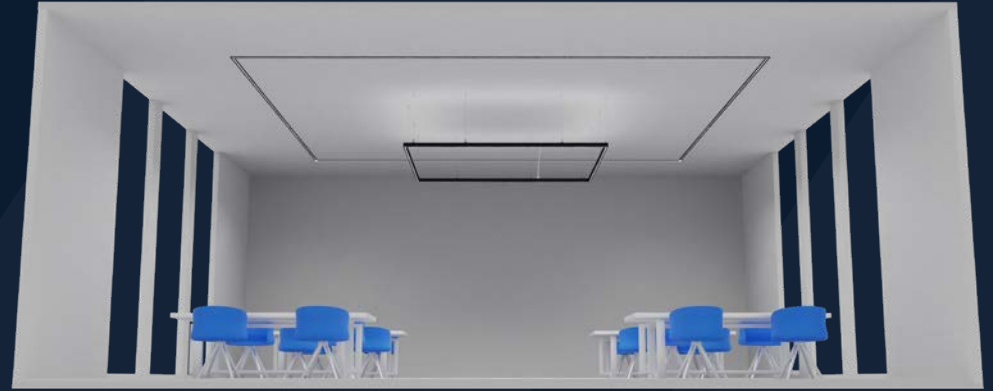
Colour choices

Black body



White body





**E N D L E S S**  
P O S S I B I L I T I E S

# Take control of GLARE

Flexbar is available with a choice of three reflectors, providing distinct levels of glare control. This allows the brightness of the luminaire to be matched to the needs of the user or type of space.

## Black

Ultra low glare optic with black louvre finish for the ultimate control of light. Ideal for applications where luminaire brightness is undesirable or mood/ambience is important.



**Typical glare rating**

**UGR <10**

**TYPICAL APPLICATION**

**Breakout Spaces**



## Metallised

Low glare optics with metallised louvre finish for high performance and efficacy. Ideal for applications such as offices, teaching spaces or any area where glare is a concern.

## White

High performance white louvre for efficiency and vibrancy. Ideal for general purpose applications where luminaire brightness is desired.



Typical glare rating

UGR <15

TYPICAL APPLICATION  
Office Areas

Typical glare rating

UGR <20

TYPICAL APPLICATION  
Corridors



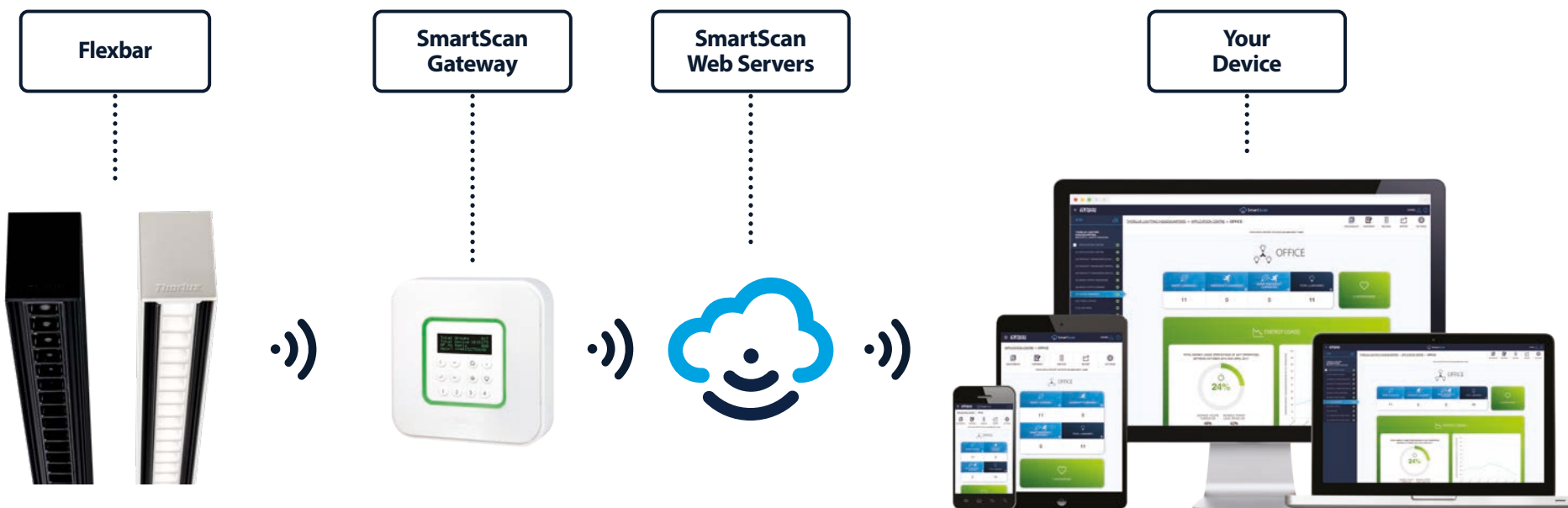
# Take control of your lighting

Flexbar is available with SmartScan, a revolutionary wireless lighting management system that allows users to control their lighting and monitor their energy performance data and complete operational information for all SmartScan standard and emergency luminaires.

Information is displayed on the SmartScan website, which can be accessed from anywhere using a desktop computer, laptop, tablet or smart-phone.

The clear graphical user interface provides an overview of the whole lighting installation, through to the performance and operation of an individual luminaire.

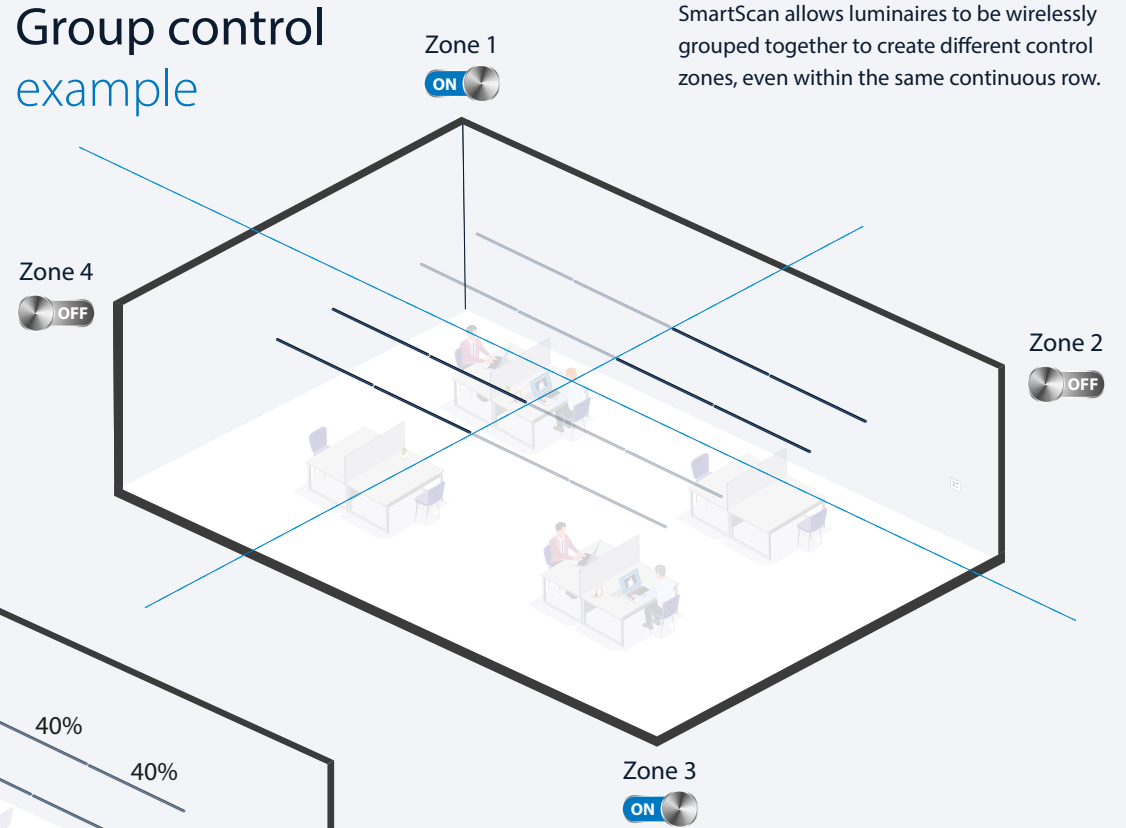
Visit the **Thorlux Control Systems** webpage to find out more



# Smart communication

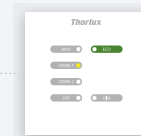
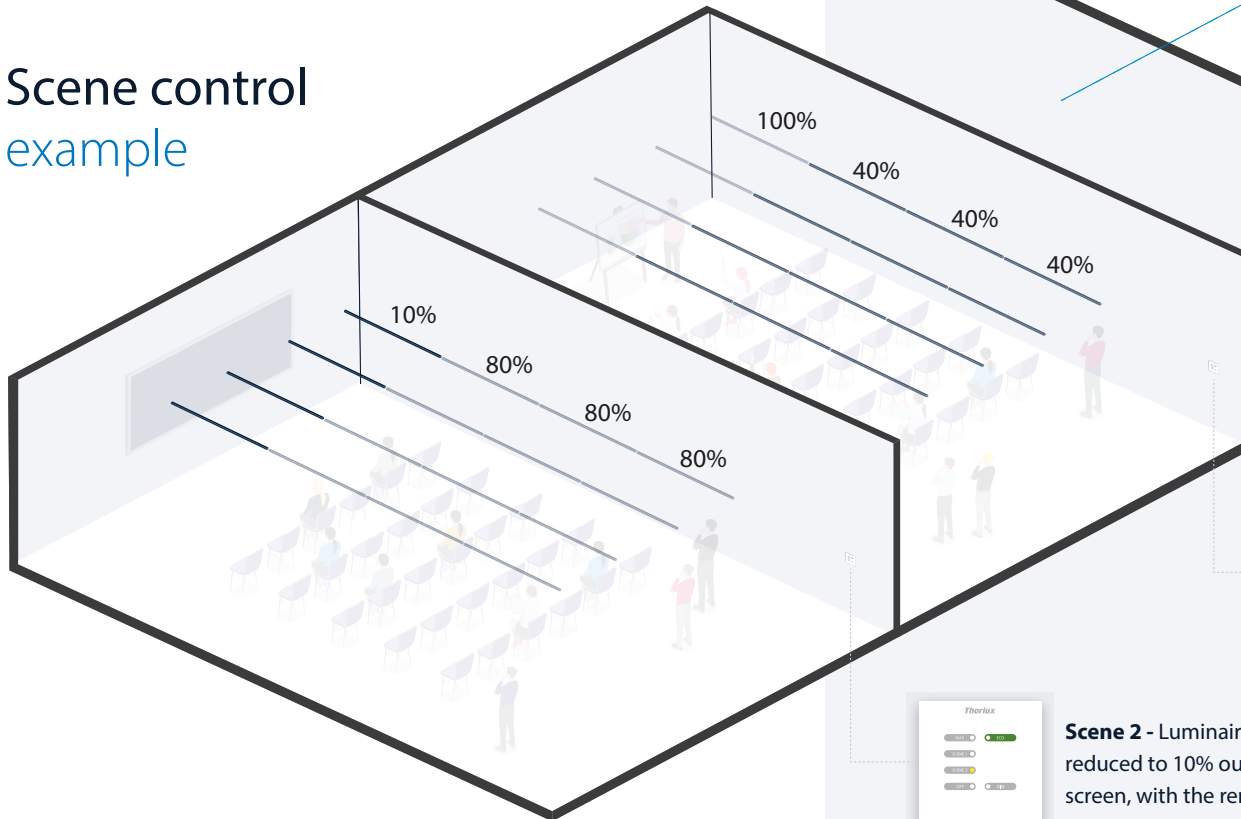
SmartScan allows individual or continuous Flexbar luminaires to communicate with each other via its wireless mesh network. This removes the need for control cables, allowing total flexibility for scene or group control.

## Group control example



SmartScan allows luminaires to be wirelessly grouped together to create different control zones, even within the same continuous row.

## Scene control example



**Scene 1** - Luminaires closest to the presenter are set at full output to ensure the presenter is illuminated, with the remaining luminaires reduced to 40% for comfort.



**Scene 2** - Luminaires closest to the presentation screen are reduced to 10% output for maximum visual acuity of the display screen, with the remaining luminaires set to 80% for note taking.

# Effortless installation

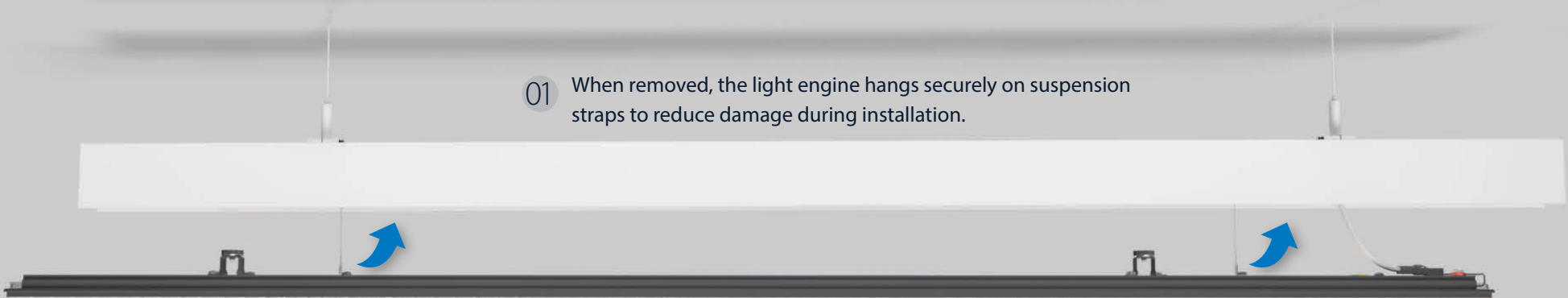
Flexbar has been designed to make installation both simple and quick. The light engine is securely held in place by high-performance magnets and can be removed to access the luminaire's internal installation connections.



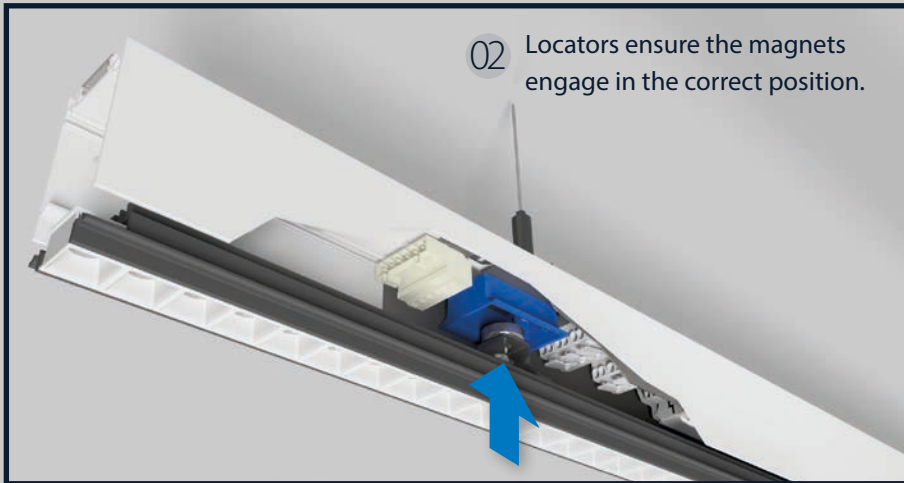
Click **play** to view the Flexbar installation video or scan the **QR code**.



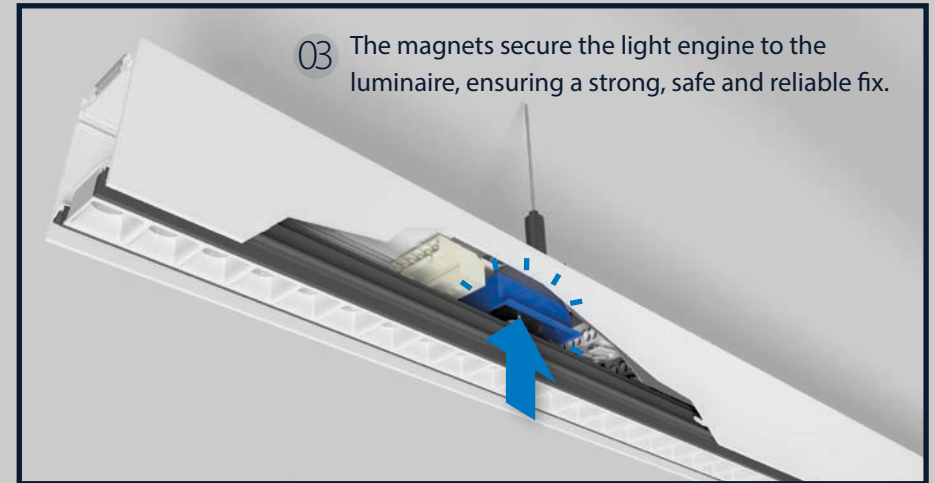
01 When removed, the light engine hangs securely on suspension straps to reduce damage during installation.

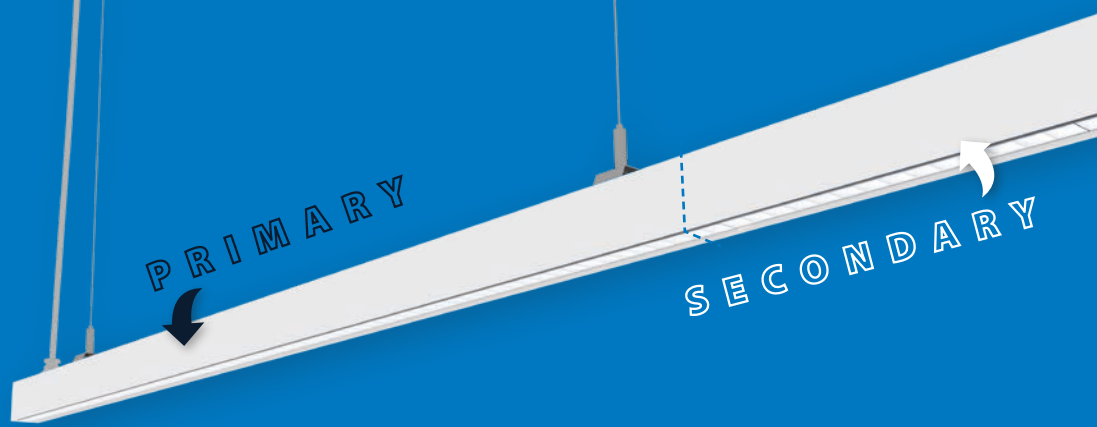


02 Locators ensure the magnets engage in the correct position.



03 The magnets secure the light engine to the luminaire, ensuring a strong, safe and reliable fix.

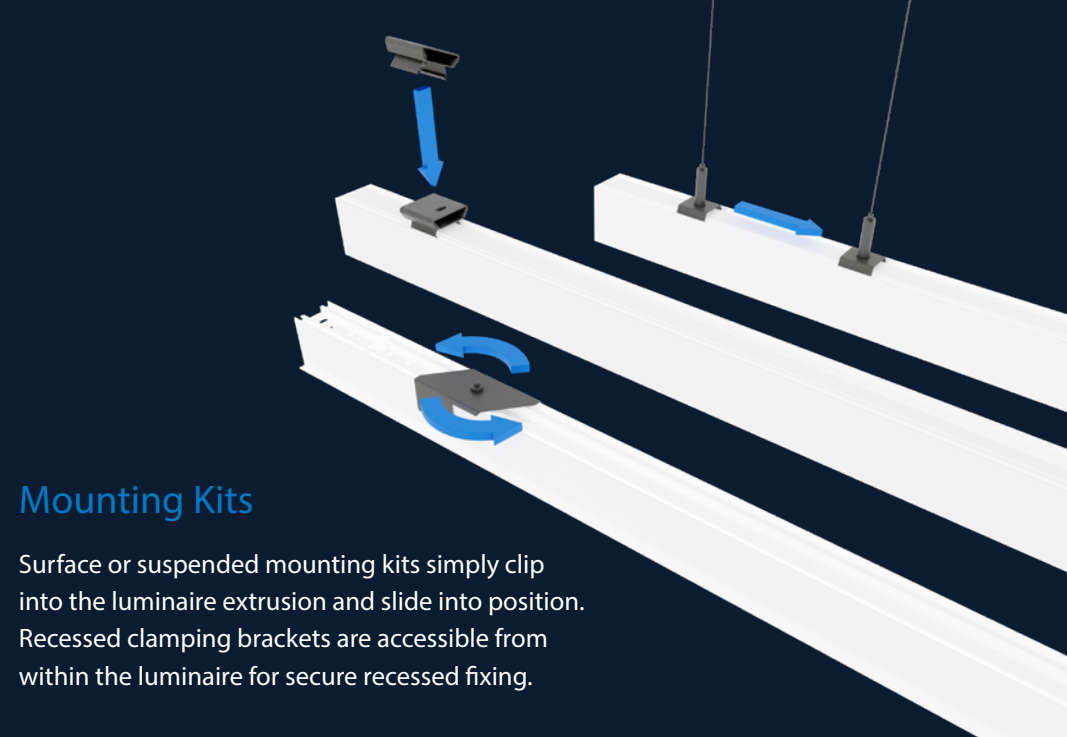




## Primary and Secondary Luminaires

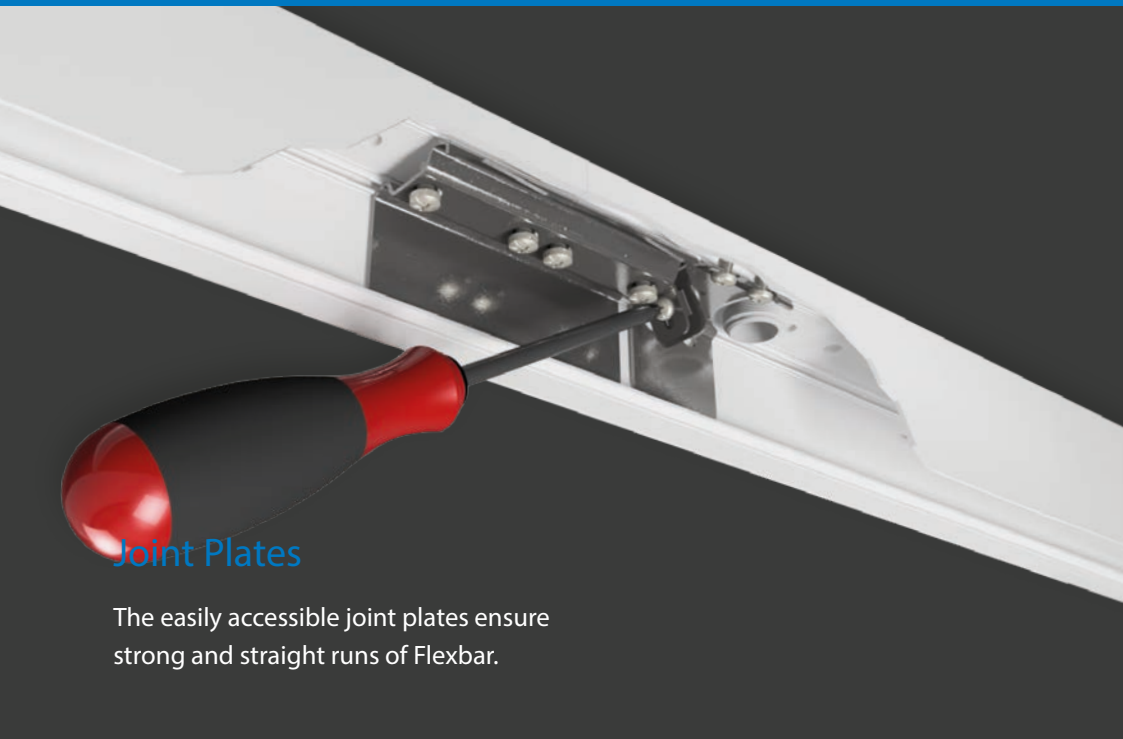
Each continuous row of Flexbar must start with a primary luminaire. The primary luminaire includes the starting connections and a fitted 3m supply lead.

Secondary luminaires simply connect using plug and play modular wiring.



## Mounting Kits

Surface or suspended mounting kits simply clip into the luminaire extrusion and slide into position. Recessed clamping brackets are accessible from within the luminaire for secure recessed fixing.



## Joint Plates

The easily accessible joint plates ensure strong and straight runs of Flexbar.



## Plug and Play

Plug and play modular wiring makes continuous versions of Flexbar fast and easy to install.

# An enhanced way of lighting

Flexbar is ideal for office environments where compliance with BS EN 12464-1 and SLL Lighting Guide 7 (LG7) is required.

The guidance provided in these documents emphasises the need to reduce energy consumption by focusing the light on the task whilst still maintaining visual interest.

Flexbar has been designed to meet the requirements of LG7 and the British Standards by providing efficient lighting to the task area.

Low glare optics and the optional upward light component achieve high levels of user comfort.



## Example lighting scheme

Best practice guidance recommends that offices should be split into different zones: the task areas, the immediate surrounding areas and the background area.

The task area in the example shown below is the desktop, the immediate surrounding area is the 0.5m border around the task area, and the background area is the rest of the floor space.

In the example shown, Flexbar has been used to meet the requirements of the British Standards and LG7. This example has been designed to the following criteria:

Task area: 500lux, 0.6 uniformity

Immediate surrounding area: 300lux, 0.4 uniformity

Background area: 100lux, 0.1 uniformity



### Lighting performance

**Average Task Area**  
519lux, 0.640 uniformity

**Average Surrounding Area**  
301lux, 0.559 uniformity

**Background Area**  
154lux, 0.425 uniformity

**Unified Glare Rating**  
UGR <10



### What was used?

Each row of Flexbar has used:

**Qty 1 - FR27LPUMS**  
27W Flexbar, 2.8m primary, with upright, metallised reflector and SmartScan control gear

**Qty 1 - FR27LSUMS**  
27W Flexbar, 2.8m secondary, with upright, metallised reflector and SmartScan control gear

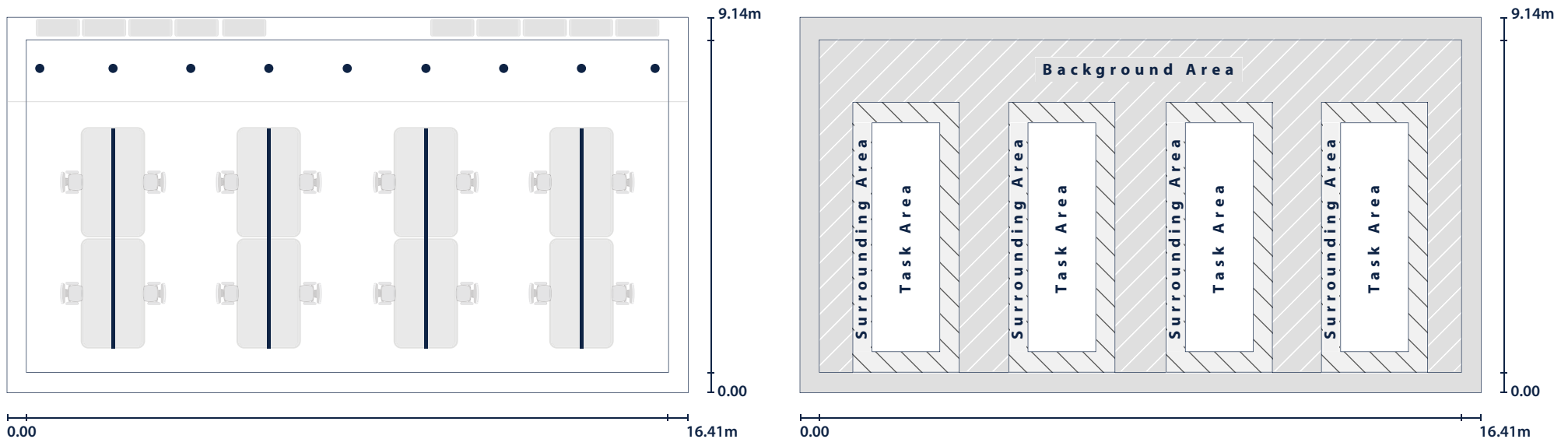
**Qty 3 - IK20182**  
Wire suspension kit (3m)



### Information

The Flexbar has been suspended at 2.6m in an office with a ceiling height of 3.2m.

Flexbar uses the metallised reflector to achieve a UGR of <10.



# A long term solution with a sustainable future

High quality and longevity have always been at the heart of Thorlux products, and Flexbar is no exception.

Designed with sustainability in mind, the construction of Flexbar uses the minimum number of materials whilst still delivering the superb efficiency and long life required in commercial applications.



Score:  
2.6

This product has been certified as having 'Excellent' circularity in accordance with the LIA/CIBSE Assured Product Verification Scheme.





### Minimised Material Usage

Flexbar has a compact body design which still retains the performance of a typically much larger luminaire, thus reducing the quantity of LEDs, components and other materials required.



### Efficient Light Distribution

High performance optics place light on the task in a controlled and efficient manner. Light distribution for versions with uplight is split 20%/80% with the majority of light still focused down to the task.



### Less power, more light

Flexbar is highly efficient, at 160LL/CW, reducing power consumption whilst providing more light.



### Recyclable at End of Life

Flexbar has been designed to achieve a long and reliable lifetime and be easily serviced. However once end of life is reached, Flexbar luminaires can be fully disassembled for easy recycling, minimising the impact on the environment.



### Easy Serviceability

All components are replaceable on site. Flexbar has been designed to allow upgrade or rectification of problems with the light engine, driver and other components, extending the lifetime of the product.



### Certified to ISO 14001

Thorlux has ISO 14001:2015 certification - the international standard for environmental management, which supports organisations in reducing their environmental impact.



### Solar Photovoltaic Installation

In 2019, Thorlux installed solar photovoltaic units on the roof of the manufacturing facility. The system is estimated to produce 224,470kWh of electricity per year, helping to power the plant and equipment as well as charging the company's fleet of hybrid and fully electric vehicles.

## Thorlux Carbon Offsetting Scheme

# What can you do to help?



Devauden, Monmouthshire



Devauden, Monmouthshire

Thorlux Lighting is committed to minimising the environmental impact of both its manufacturing processes and its products.

In 2009 Thorlux started planting trees in an ambitious carbon-offsetting scheme to help compensate for the carbon dioxide (CO<sub>2</sub>) emissions released into the atmosphere as an indirect result of its factory and selling activities.

The scheme is open to all our customers who want to offset their carbon footprint.

Further information on the scheme, how the sites are managed and how you can get involved can be found at [www.thorlux.co.uk/carbon-offsetting](http://www.thorlux.co.uk/carbon-offsetting)



# Recessed Individual

SLIMLINE, LOW GLARE  
LINEAR LUMINAIRES



## SPECIFICATION

- Extruded aluminium body and light engine
- White (RAL9016) or black (RAL9005) finishes available
- Custom optical system combining a reflector and optical lens for each LED
- Magnetic clip-in light engine
- Supplied fitted with 2m supply lead and adjustable recessing ceiling brackets
- Black 'invisible' light source, metallised low glare and white reflector options
- Low glare optics for EN12464-1 / LG7 (<math><1500\text{cd/m}^2 @ 65^\circ</math>) when using the metallised or black reflector
- Fitted with 4000K LEDs

## SmartScan Configurations



Find out more at [www.thorlux.com/smartsan](http://www.thorlux.com/smartsan)

Technical information and finishing components from page 26.

## LED CHARACTERISTICS

CRI	<b>80</b>
COLOUR TEMPERATURE	<b>4000K</b>
RATED LIFE (HOURS)	<b>100K - L80/B10</b>
PROTECTION	<b>LUX GUARD</b>
DRIVER EFFICIENCY	<b>&gt;81%</b>
REPLACEABLE	<b>YES</b>
POWER FACTOR	<b>&gt;0.9</b>

**LL/CW 160.5**

For LED characteristics explanation see [www.thorlux.com/led-guide](http://www.thorlux.com/led-guide)

## WEIGHTS

VERSION	APPROX. kg	EMERGENCY	SMARTSCAN EMERGENCY
1400	4.2	Add 0.3kg to weight listed. <b>SMARTSCAN</b>	Add 0.4kg to weight listed.
2800	7.6	Add 0.1kg to weight listed.	

## LUMINAIRE CONFIGURATOR

EMERGENCY TYPE	PRODUCT CODE	WATTAGE	LENGTH	VARIANT	REFLECTOR	CONTROL TYPE
<b>1400mm Individual</b>						
W SmartScan*	<b>FXR</b> Flexbar Recessed	<b>08</b> 08W	<b>M</b> 1400	<b>V</b> Individual	<b>W</b> White	<b>S</b> SmartScan
T AutoTest**		<b>14</b> 14W			<b>M</b> Metallised	<b>A</b> Dimming (DALI)
E Emergency**		<b>20</b> 20W			<b>B</b> Black	<b>L</b> Non-dimming
		<b>31</b> 31W				
<b>2800mm Individual</b>						
W SmartScan*	<b>FXR</b> Flexbar Recessed	<b>16</b> 16W	<b>L</b> 2800	<b>V</b> Individual	<b>W</b> White	<b>S</b> SmartScan
T AutoTest**		<b>27</b> 27W			<b>M</b> Metallised	<b>A</b> Dimming (DALI)
E Emergency**		<b>39</b> 39W			<b>B</b> Black	<b>L</b> Non-dimming
		<b>63</b> 63W				

## E.g. WFXR08MVMS

W SmartScan	<b>FXR</b> Flexbar Recessed	<b>08</b> 08W	<b>M</b> 1400	<b>V</b> Individual	<b>M</b> Metallised	<b>S</b> SmartScan
-------------	-----------------------------	---------------	---------------	---------------------	---------------------	--------------------

◆ Optional; leave blank if emergency is not required

\* Only available with S control type

\*\* Not available with S control type

Note: White body as standard. For black body versions, suffix catalogue number with **B6**.



# Suspended/Surface Individual

SLIMLINE, LOW GLARE  
LINEAR LUMINAIRES



## SPECIFICATION

- Extruded aluminium body and light engine
- White (RAL9016) or black (RAL9005) finishes available
- Custom optical system combining a reflector and optical lens for each LED
- Magnetic clip-in light engine
- Versions with optional uplight
- Supplied with easily adjustable 3.5m wire suspensions and surface mounting kit, and fitted with 3m supply lead
- Black 'invisible' light source, metallised low glare and white reflector options
- Low glare optics for EN12464-1 / LG7 (<math><1500\text{cd/m}^2 @ 65^\circ</math>) when using the metallised or black reflector
- Fitted with 4000K LEDs

## SmartScan Configurations



Find out more at [www.thorlux.com/smartsan](http://www.thorlux.com/smartsan)

Technical information from page 26.

## LED CHARACTERISTICS

CRI	<b>80</b>
COLOUR TEMPERATURE	<b>4000K</b>
RATED LIFE (HOURS)	<b>100K - L80/B10</b>
PROTECTION	<b>LUX GUARD</b>
DRIVER EFFICIENCY	<b>&gt;81%</b>
REPLACEABLE	<b>YES</b>
POWER FACTOR	<b>&gt;0.9</b>
<b>LL/CW</b>	<b>160.5</b>

For LED characteristics explanation see [www.thorlux.com/led-guide](http://www.thorlux.com/led-guide)

## WEIGHTS

VERSION	APPROX. kg	EMERGENCY	SMARTSCAN EMERGENCY
1400	4.0 ●	Add 0.3kg to weight listed. <b>SMARTSCAN</b>	Add 0.4kg to weight listed. <b>UPLIGHT</b>
2800	7.2 ▲	Add 0.1kg to weight listed.	Add ● 0.2kg or ▲ 0.4kg to weight.

## LUMINAIRE CONFIGURATOR

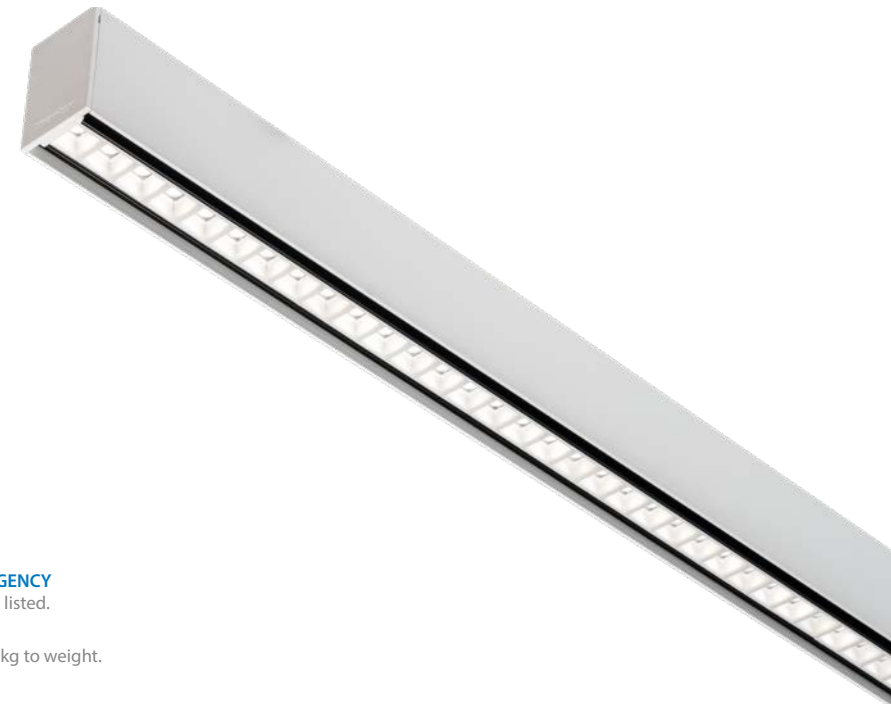
EMERGENCY TYPE ◆	PRODUCT CODE	WATTAGE	LENGTH	VARIANT	UPLIGHT	REFLECTOR	CONTROL TYPE
<b>1400mm Individual</b>							
<b>W</b> SmartScan*	<b>FR</b> Flexbar	<b>08</b> 08W	<b>M</b> 1400	<b>V</b> Individual	<b>X</b> No uplight	<b>W</b> White	<b>S</b> SmartScan
<b>T</b> AutoTest**		<b>14</b> 14W			<b>U</b> Uplight	<b>M</b> Metallised	<b>A</b> Dimming (DALI)
<b>E</b> Emergency**		<b>20</b> 20W				<b>B</b> Black	<b>L</b> Non-dimming
		<b>31</b> 31W					
<b>2800mm Individual</b>							
<b>W</b> SmartScan*	<b>FR</b> Flexbar	<b>16</b> 16W	<b>L</b> 2800	<b>V</b> Individual	<b>X</b> No uplight	<b>W</b> White	<b>S</b> SmartScan
<b>T</b> AutoTest**		<b>27</b> 27W			<b>U</b> Uplight	<b>M</b> Metallised	<b>A</b> Dimming (DALI)
<b>E</b> Emergency**		<b>39</b> 39W				<b>B</b> Black	<b>L</b> Non-dimming
		<b>63</b> 63W					

## E.g. WFR08MVUMS

<b>W</b> SmartScan	<b>FR</b> Flexbar	<b>08</b> 08W	<b>M</b> 1400	<b>V</b> Individual	<b>U</b> Uplight	<b>M</b> Metallised	<b>S</b> SmartScan
--------------------	-------------------	---------------	---------------	---------------------	------------------	---------------------	--------------------

◆ Optional; leave blank if emergency is not required \* Only available with S control type \*\* Not available with S control type

Note: White body as standard. For black body versions, suffix catalogue number with B6.



# Recessed Continuous

SLIMLINE, LOW GLARE  
LINEAR LUMINAIRES



## SPECIFICATION

- Extruded aluminium body and light engine
- White (RAL9016) or black (RAL9005) finishes available
- Custom optical system combining a reflector and optical lens for each LED
- Integral through wiring system with plug and socket connectors
- Magnetic clip-in light engine
- Supplied with adjustable recessing ceiling brackets
- Primary luminaire supplied with end kit and fitted with 2m supply lead
- Black 'invisible' light source, metallised low glare or white reflector options
- Low glare optics for EN12464-1 / LG7 (<1500cd/m<sup>2</sup> @ 65°) when using the metallised or black reflector
- Fitted with 4000K LEDs

## LED CHARACTERISTICS

CRI	80
COLOUR TEMPERATURE	4000K
RATED LIFE (HOURS)	100K - L80/B10
PROTECTION	LUX GUARD
DRIVER EFFICIENCY	>81%
REPLACEABLE	YES
POWER FACTOR	>0.9

LL/CW **160.5**

For LED characteristics explanation see [www.thorlux.com/led-guide](http://www.thorlux.com/led-guide)

Technical information and finishing components from page 26.

## SmartScan Configurations



Find out more at [www.thorlux.com/smartsan](http://www.thorlux.com/smartsan)

## WEIGHTS

VERSION	APPROX. kg	EMERGENCY	SMARTSCAN EMERGENCY
1400	4.4	Add 0.3kg to weight listed.	Add 0.4kg to weight listed.
2800	7.8	Add 0.1kg to weight listed.	

## LUMINAIRE CONFIGURATOR

	EMERGENCY TYPE ♦	PRODUCT CODE	WATTAGE	LENGTH	VARIANT	REFLECTOR	CONTROL TYPE
Primary Straight	2800mm Continuous						
	W SmartScan*	FXR Flexbar Recessed	16 16W	L 2800	P Primary	W White	S SmartScan
	T AutoTest**		27 27W			M Metallised	A Dimming (DALI)
	E Emergency**		39 39W			B Black	L Non-dimming
			63 63W				
Secondary Straight	1400mm Continuous						
	W SmartScan*	FXR Flexbar Recessed	08 08W	M 1400	S Secondary	W White	S SmartScan
	T AutoTest**		14 14W			M Metallised	A Dimming (DALI)
	E Emergency**		20 20W			B Black	L Non-dimming
			31 31W				
Secondary Straight	2800mm Continuous						
	W SmartScan*	FXR Flexbar Recessed	16 16W	L 2800	S Secondary	W White	S SmartScan
	T AutoTest**		27 27W			M Metallised	A Dimming (DALI)
	E Emergency**		39 39W			B Black	L Non-dimming
			63 63W				

## E.g. WFXR16LPWS

W SmartScan	FXR Flexbar Recessed	16 16W	L 2800	P Primary	W White	S SmartScan
-------------	----------------------	--------	--------	-----------	---------	-------------

♦ Optional; leave blank if emergency is not required \* Only available with S control type \*\* Not available with S control type

Note: White body as standard. For black body versions, suffix catalogue number with B6.

## SLIMLINE, LOW GLARE LINEAR LUMINAIRES



### SPECIFICATION

- Extruded aluminium body and light engine
- White (RAL9016) or black (RAL9005) finishes available
- Custom optical system combining a reflector and optical lens for each LED
- Integral through wiring system with plug and socket connectors
- Magnetic clip-in light engine
- Versions with optional uplight
- Suitable for wire suspending or surface mounting (see finishing components on page 27)
- Primary luminaire supplied with end kit and fitted with 3m supply lead
- Black 'invisible' light source, metallised low glare and white reflector options
- Low glare optics for EN12464-1 / LG7 (<math><1500\text{cd/m}^2 @ 65^\circ</math>) when using the metallised or black reflector
- Fitted with 4000K LEDs

### LED CHARACTERISTICS

CRI	80
COLOUR TEMPERATURE	4000K
RATED LIFE (HOURS)	100K - L80/B10
PROTECTION	LUX GUARD
DRIVER EFFICIENCY	>81%
REPLACEABLE	YES
POWER FACTOR	>0.9

LL/CW **160.5**

For LED characteristics explanation see [www.thorlux.com/led-guide](http://www.thorlux.com/led-guide)



Technical information and finishing components from page 26.

### SmartScan Configurations



Find out more at [www.thorlux.com/smartsan](http://www.thorlux.com/smartsan)

### WEIGHTS

VERSION	APPROX. kg	EMERGENCY	SMARTSCAN EMERGENCY
1400 Secondary	3.5 ●	Add 0.3kg to weight listed.	Add 0.4kg to weight listed.
2800 Primary	7.3 ▲	<b>SMARTSCAN</b> Add 0.1kg to weight listed.	<b>UPLIGHT</b> Add ● 0.2kg or ▲ 0.4kg to weight.
2800 Secondary	6.7 ▲		

### LUMINAIRE CONFIGURATOR

	EMERGENCY TYPE ◆	PRODUCT CODE	WATTAGE	LENGTH	VARIANT	UPLIGHT	REFLECTOR	CONTROL TYPE
Primary Straight	2800mm Continuous							
	W SmartScan*	FR Flexbar	16 16W	L 2800	P Primary	X No uplight	W White	S SmartScan
	T AutoTest**		27 27W			U Uplight	M Metallised	A Dimming (DALI)
	E Emergency**		39 39W				B Black	L Non-dimming
			63 63W					
Secondary Straight	1400mm Continuous							
	W SmartScan*	FR Flexbar	08 08W	M 1400	S Secondary	X No uplight	W White	S SmartScan
	T AutoTest**		14 14W			U Uplight	M Metallised	A Dimming (DALI)
	E Emergency**		20 20W				B Black	L Non-dimming
			31 31W					
	2800mm Continuous							
	W SmartScan*	FR Flexbar	16 16W	L 2800	S Secondary	X No uplight	W White	S SmartScan
	T AutoTest**		27 27W			U Uplight	M Metallised	A Dimming (DALI)
	E Emergency**		39 39W				B Black	L Non-dimming
			63 63W					

### E.g. WFR16LPXWS

W SmartScan	FR Flexbar	16 16W	L 2800	P Primary	X No uplight	W White	S SmartScan
-------------	------------	--------	--------	-----------	--------------	---------	-------------

◆ Optional; leave blank if emergency is not required

\* Only available with S control type

\*\* Not available with S control type

Note: White body as standard. For black body versions, suffix catalogue number with B6.

# Suspended/Surface Continuous

# Recessed Corner Joints

SLIMLINE, LOW GLARE  
LINEAR LUMINAIRES



## SPECIFICATION

- Extruded aluminium body and light engine
- White (RAL9016) or black (RAL9005) finishes available
- Custom optical system combining a reflector and optical lens for each LED
- Integral through wiring system with plug and socket connectors
- Magnetic clip-in light engine
- Supplied with adjustable recessing ceiling brackets
- Primary luminaire supplied with end kit and fitted with 2m supply lead
- Black 'invisible' light source, metallised low glare or white reflector options
- Low glare optics for EN12464-1 / LG7 (<1500cd/m<sup>2</sup> @ 65°) when using the metallised or black reflector
- Fitted with 4000K LEDs

## SmartScan Configurations



Find out more at [www.thorlux.com/smartsan](http://www.thorlux.com/smartsan)

Technical information and finishing components from page 26.

## LED CHARACTERISTICS

CRI	<b>80</b>
COLOUR TEMPERATURE	<b>4000K</b>
RATED LIFE (HOURS)	<b>100K - L80/B10</b>
PROTECTION	<b>LUX GUARD</b>
DRIVER EFFICIENCY	<b>&gt;81%</b>
REPLACEABLE	<b>YES</b>
POWER FACTOR	<b>&gt;0.9</b>

**LL/CW 160.5**

For LED characteristics explanation see [www.thorlux.com/led-guide](http://www.thorlux.com/led-guide)

## WEIGHTS

VERSION	APPROX. kg	SMARTSCAN
CORNER	4.7	Add 0.1kg to weight listed.

## LUMINAIRE CONFIGURATOR

PRODUCT CODE	WATTAGE	LENGTH	VARIANT	REFLECTOR	CONTROL TYPE
<b>Primary Corner</b>					
<b>FXR</b> Flexbar Recessed	<b>08</b> 08W <b>14</b> 14W <b>20</b> 20W <b>31</b> 31W	<b>C</b> 850 x 870	<b>PL</b> Primary left corner <b>PR</b> Primary right corner	<b>W</b> White <b>M</b> Metallised <b>B</b> Black	<b>S</b> SmartScan <b>A</b> Dimming (DALI) <b>L</b> Non-dimming
<b>Secondary Corner</b>					
<b>FXR</b> Flexbar Recessed	<b>08</b> 08W <b>14</b> 14W <b>20</b> 20W <b>31</b> 31W	<b>C</b> 850 x 870	<b>SL</b> Secondary left corner <b>SR</b> Secondary right corner	<b>W</b> White <b>M</b> Metallised <b>B</b> Black	<b>S</b> SmartScan <b>A</b> Dimming (DALI) <b>L</b> Non-dimming

## E.g. FXR08CPLWS

<b>FXR</b> Flexbar Recessed	<b>08</b> 08W	<b>C</b> 850 x 870	<b>PL</b> Primary left corner	<b>W</b> White	<b>S</b> SmartScan
-----------------------------	---------------	--------------------	-------------------------------	----------------	--------------------

Note: White body as standard. For black body versions, suffix catalogue number with **B6**. Note: Corners not available with emergency version.





# Suspended/Surface Corner Joints

## SLIMLINE, LOW GLARE LINEAR LUMINAIRES



### SPECIFICATION

- Extruded aluminium body and light engine
- White (RAL9016) or black (RAL9005) finishes available
- Custom optical system combining a reflector and optical lens for each LED
- Integral through wiring system with plug and socket connectors
- Magnetic clip-in light engine
- Versions with optional uplight
- Suitable for wire suspending or surface mounting (see finishing components on page 27)
- Primary luminaire supplied with end kit and fitted with 3m supply lead
- Black 'invisible' light source, metallised low glare and white reflector options
- Low glare optics for EN12464-1 / LG7 (<math><1500\text{cd}/\text{m}^2 @ 65^\circ</math>) when using the metallised or black reflector
- Fitted with 4000K LEDs

### SmartScan Configurations



Find out more at [www.thorlux.com/smartsan](http://www.thorlux.com/smartsan)

Technical information and finishing components from page 26.

### LED CHARACTERISTICS

CRI	<b>80</b>
COLOUR TEMPERATURE	<b>4000K</b>
RATED LIFE (HOURS)	<b>100K - L80/B10</b>
PROTECTION	<b>LUX GUARD</b>
DRIVER EFFICIENCY	<b>&gt;81%</b>
REPLACEABLE	<b>YES</b>
POWER FACTOR	<b>&gt;0.9</b>

**LL/CW 160.5**

For LED characteristics explanation see [www.thorlux.com/led-guide](http://www.thorlux.com/led-guide)

### WEIGHTS

VERSION	APPROX. kg	SMARTSCAN
CORNER	4.5	Add 0.1kg to weight listed. <b>UPLIGHT</b> Add 0.2kg to weight.

### LUMINAIRE CONFIGURATOR

PRODUCT CODE	WATTAGE	LENGTH	VARIANT	UPLIGHT	REFLECTOR	CONTROL TYPE
<b>Primary Corner</b>						
<b>FR</b> Flexbar	<b>08</b> 08W	<b>C</b> 870 x 850	<b>PL</b> Primary left corner	<b>X</b> No uplight	<b>W</b> White	<b>S</b> SmartScan
	<b>14</b> 14W		<b>PR</b> Primary right corner	<b>U</b> Uplight	<b>M</b> Metallised	<b>A</b> Dimming (DALI)
	<b>20</b> 20W			<b>B</b> Black	<b>L</b> Non-dimming	
	<b>31</b> 31W					
<b>Secondary Corner</b>						
<b>FR</b> Flexbar	<b>08</b> 08W	<b>C</b> 870 x 850	<b>SL</b> Secondary left corner	<b>X</b> No uplight	<b>W</b> White	<b>S</b> SmartScan
	<b>14</b> 14W		<b>SR</b> Secondary right corner	<b>U</b> Uplight	<b>M</b> Metallised	<b>A</b> Dimming (DALI)
	<b>20</b> 20W			<b>B</b> Black	<b>L</b> Non-dimming	
	<b>31</b> 31W					

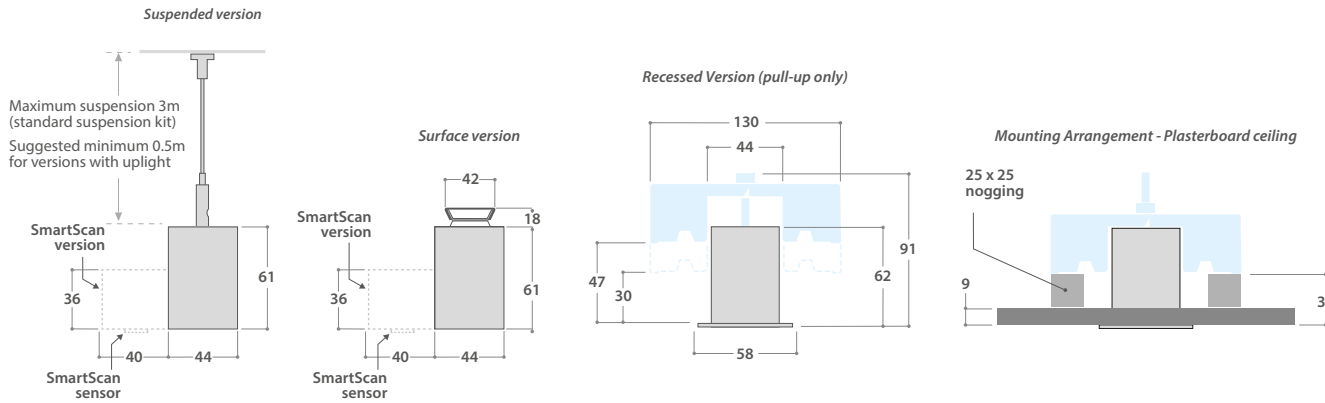
### E.g. FR08CPLXWS

<b>FR</b> Flexbar	<b>08</b> 08W	<b>C</b> 870 x 850	<b>PL</b> Primary left corner	<b>X</b> No uplight	<b>W</b> White	<b>S</b> SmartScan
-------------------	---------------	--------------------	-------------------------------	---------------------	----------------	--------------------

Note: White body as standard. For black body versions, suffix catalogue number with **B6**. Note: Corners not available with emergency version.



## DIMENSIONS

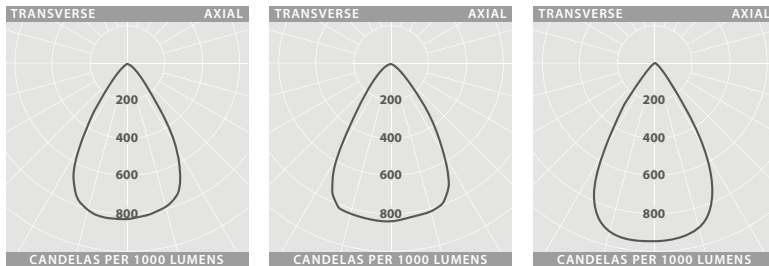


## FINISHING COMPONENTS

DESCRIPTION	CAT. No.	APPROX. kg
Wire suspension kit (3m length)*	<b>IK 20181</b>	0.05
Surface mounting kit*	<b>IK 20182</b>	0.04
Recessed tethering kit	<b>IK 20274</b>	0.01
Surface wiring tidy - white	<b>LL13361W12</b>	0.40
Surface wiring tidy - black	<b>LL13361B6</b>	0.40

\* See fixing location graphics above for required quantities.

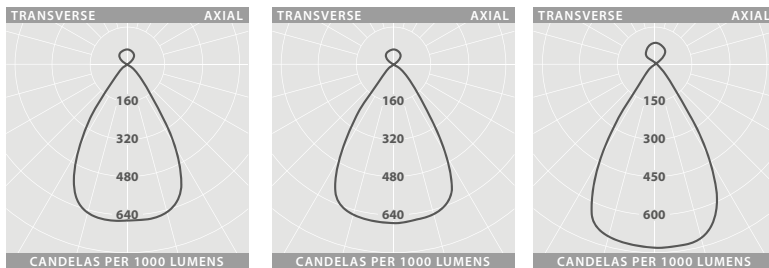
## PHOTOMETRIC GUIDE



Downlight only  
**WHITE REFLECTOR**

Downlight only  
**METALLISED REFLECTOR**

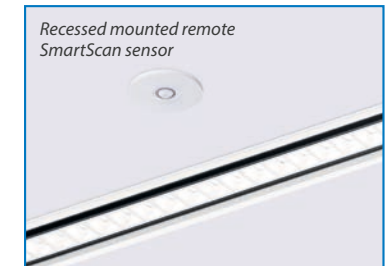
Downlight only  
**BLACK REFLECTOR**



Up and downlight  
**WHITE REFLECTOR**

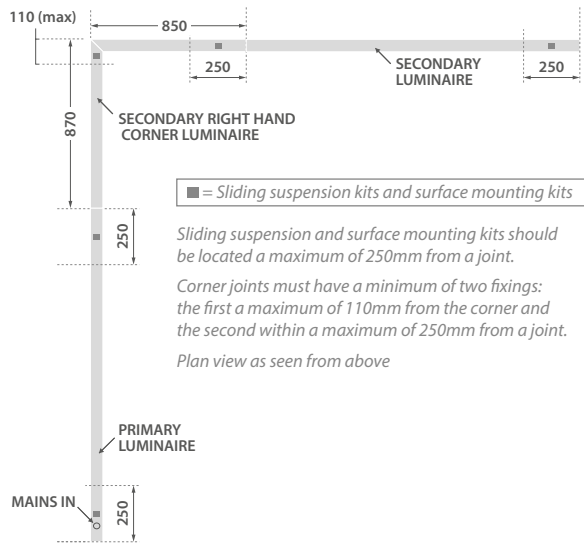
Up and downlight  
**METALLISED REFLECTOR**

Up and downlight  
**BLACK REFLECTOR**

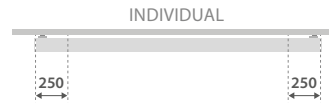


The SmartScan sensor is located centrally along the length of the luminaire which enables wireless grouping if required.

## SUSPENDED AND SURFACE MOUNTED CORNER JOINT FIXING LOCATIONS

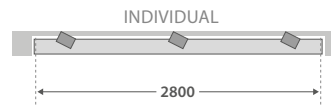


## SUSPENDED AND SURFACE MOUNTED INDIVIDUAL LUMINAIRE FIXING LOCATIONS



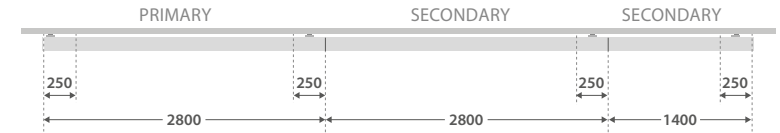
Sliding suspension kits and surface mounting kits should be located a maximum of 250mm from either end.

## RECESSED MOUNTED INDIVIDUAL LUMINAIRE FIXING LOCATIONS



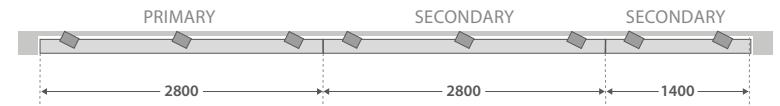
Individual recessed version cut-out size:  $2800 + 6^* = 2806 \times 48\text{mm}$   
 \* = 2 x End Caps

## SUSPENDED AND SURFACE MOUNTED CONTINUOUS LUMINAIRE FIXING LOCATIONS



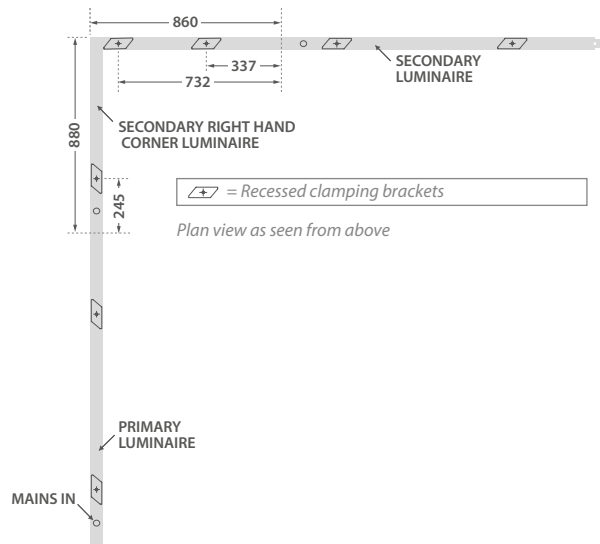
Sliding suspension kits and surface mounting kits should be located a maximum of 250mm either side of joints or from ends.

## RECESSED MOUNTED CONTINUOUS LUMINAIRE FIXING LOCATIONS



Continuous recessed version cut-out size:  $2800 + 2800 + 1400 + 6^* = 7006 \times 48\text{mm}$   
 \* = 2 x End Caps

## RECESSED CORNER JOINT FIXING LOCATIONS



## PRIMARY AND SECONDARY LUMINAIRES

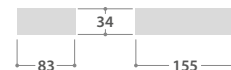


Continuous luminaires should start with a Primary followed by a Secondary luminaire up to a maximum of 12m. A new Primary luminaire must be used with a new electrical connection at 12m intervals.

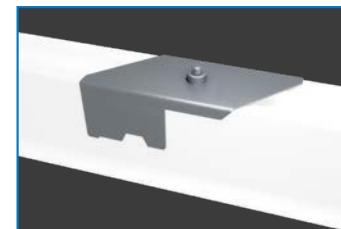
## WIRING TIDY



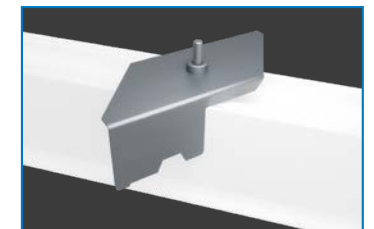
Suitable for use with suspended versions the wiring tidy is a surface mounted, easy connect, wiring box for use on solid ceilings.



## RECESSED MOUNTED INSTALLATION



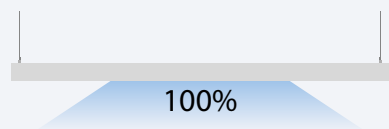
1 - Offer up the luminaire into the cut aperture and tighten the screw from below



2 - The bracket will rotate against the body and pull the body up to the ceiling

# Technical Data

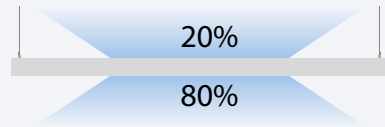
## Downlight only



	LED WATTAGE PER METRE	Downlight Only 1.4m —		Downlight Only 2.8m —		Downlight Only Corner L	
		LED WATTAGE	LUMEN OUTPUT	LED WATTAGE	LUMEN OUTPUT	LED WATTAGE	LUMEN OUTPUT
WHITE	6	8	1460	16	2920	8	1460
	10	14	2360	27	4720	14	2360
	14	20	3350	39	6700	20	3350
	22	31	5090	63	10180	31	5090
METALLISED	6	8	1525	16	3050	8	1525
	10	14	2470	27	4940	14	2470
	14	20	3505	39	7010	20	3505
	22	31	5325	63	10650	31	5325
BLACK	6	8	1195	16	2390	8	1195
	10	14	1930	27	3860	14	1930
	14	20	2740	39	5480	20	2740
	22	31	4165	63	8330	31	4165

# Technical Data

## Up and Downlight



	LED WATTAGE PER METRE	Up and Downlight 1.4m —		Up and Downlight 2.8m —		Up and Downlight Corner L	
		LED WATTAGE	LUMEN OUTPUT	LED WATTAGE	LUMEN OUTPUT	LED WATTAGE	LUMEN OUTPUT
WHITE	6	8	1450	16	2900	8	1450
	10	14	2350	27	4700	14	2350
	14	20	3345	39	6690	20	3345
	22	31	5105	63	10210	31	5105
METALLISED	6	8	1525	16	3050	8	1525
	10	14	2470	27	4940	14	2470
	14	20	3510	39	7020	20	3510
	22	31	5355	63	10710	31	5355
BLACK	6	8	1240	16	2480	8	1240
	10	14	2010	27	4020	14	2010
	14	20	2860	39	5720	20	2860
	22	31	4365	63	8730	31	4365



# Flex Family

The Flex family is a range of luminaires providing high quality, low glare lighting in a range of form factors, allowing the lighting designer to create attractive and inspirational spaces.

For further information on Flex family products, please contact your local lighting sales engineer or visit [www.thorlux.com/products](http://www.thorlux.com/products)



## Flexview

Flexview is a recessed lay-in luminaire with a dual light engine. Flexview combines a low-power, edge-lit picture window with separate sophisticated and highly efficient low glare optics for main space illumination.



[www.thorlux.com/Flexview](http://www.thorlux.com/Flexview)



## Flexline

Flexline is a super narrow profile luminaire specifically for mounting to exposed T-bar ceilings. It is available in different lengths and shapes to create interesting lighting arrangements, offering a radically different solution to conventional 600x600 luminaires.



[www.thorlux.com/Flexline](http://www.thorlux.com/Flexline)

## Flexbeam

Flexbeam is a suspended, narrow profile acoustic luminaire which can be installed alongside the Flexbeam plain baffles to create a combined acoustic and low glare lighting solution.



[www.thorlux.com/Flexbeam](http://www.thorlux.com/Flexbeam)

## Flexbar

Flexbar is the new slim, low glare linear luminaire that can be individually or continuously surface mounted, suspended or recessed. Available with or without uplight, in white or black finish, available in three sizes and with the choice of three reflectors, expanding the Flex family.



[www.thorlux.com/Flexbar](http://www.thorlux.com/Flexbar)



Designers, manufacturers and suppliers  
of professional lighting systems

INDUSTRIAL LUMINAIRES  
COMMERCIAL LUMINAIRES  
FLOODLIGHTING LUMINAIRES  
ARCHITECTURAL LUMINAIRES  
HEALTHCARE LUMINAIRES  
HAZARDOUS AREA LUMINAIRES  
RETAIL AND DISPLAY LUMINAIRES  
CONTROLS AND SYSTEMS

A DIVISION OF F.W. THORPE PLC

**Thorlux Carbon Offsetting Project:**  
[www.thorlux.com/trees](http://www.thorlux.com/trees)

The information given in this catalogue is typical and must not be interpreted as a guarantee of individual product performance and/or characteristics. We reserve the right to alter specifications and designs without prior notice.

Thorlux Lighting  
Merse Road  
North Moons Moat  
Redditch  
Worcestershire  
B98 9HH  
England

**T** +44 (0)1527 583200  
**F** +44 (0)1527 584177  
**E** [thorlux@thorlux.co.uk](mailto:thorlux@thorlux.co.uk)  
**W** [www.thorlux.com](http://www.thorlux.com)

**Direct UK Sales Line: 01527 583222**

Thorlux Lighting Ireland  
Unit G6  
Riverview Business Park  
Nangor Road  
Gallanstown  
Dublin 12  
Ireland

**T** +353 (0)1 460 4608  
**F** +353 (0)1 460 4609  
**E** [thorlux@thorlux.ie](mailto:thorlux@thorlux.ie)  
**W** [www.thorlux.ie](http://www.thorlux.ie)

Thorlux Lighting Australasia Pty Ltd.  
31 Cross Street  
Brookvale  
Sydney  
NSW 2100  
Australia

**T** 1300 04 32 32  
**T** +61 (0)2 9907 1261  
**E** [thorlux@thorlux.com.au](mailto:thorlux@thorlux.com.au)  
**W** [www.thorlux.com.au](http://www.thorlux.com.au)

Registered No. ABN 139 400 507

SchahLED Lighting GmbH  
Max-Plack-Straße 9  
85716 Unterschleißheim  
Deutschland

**T** +49 (0)89 90 11 98 20  
**E** [info@schahled.de](mailto:info@schahled.de)  
**W** [www.schahled.de](http://www.schahled.de)



Easy LED Oy  
Meriniitynkatu 11  
FI-24100 Salo,  
FINLAND  
p. 02 737 44 20, [info@easyled.fi](mailto:info@easyled.fi)



FM 10913 EMS 532104 OHS 704131

