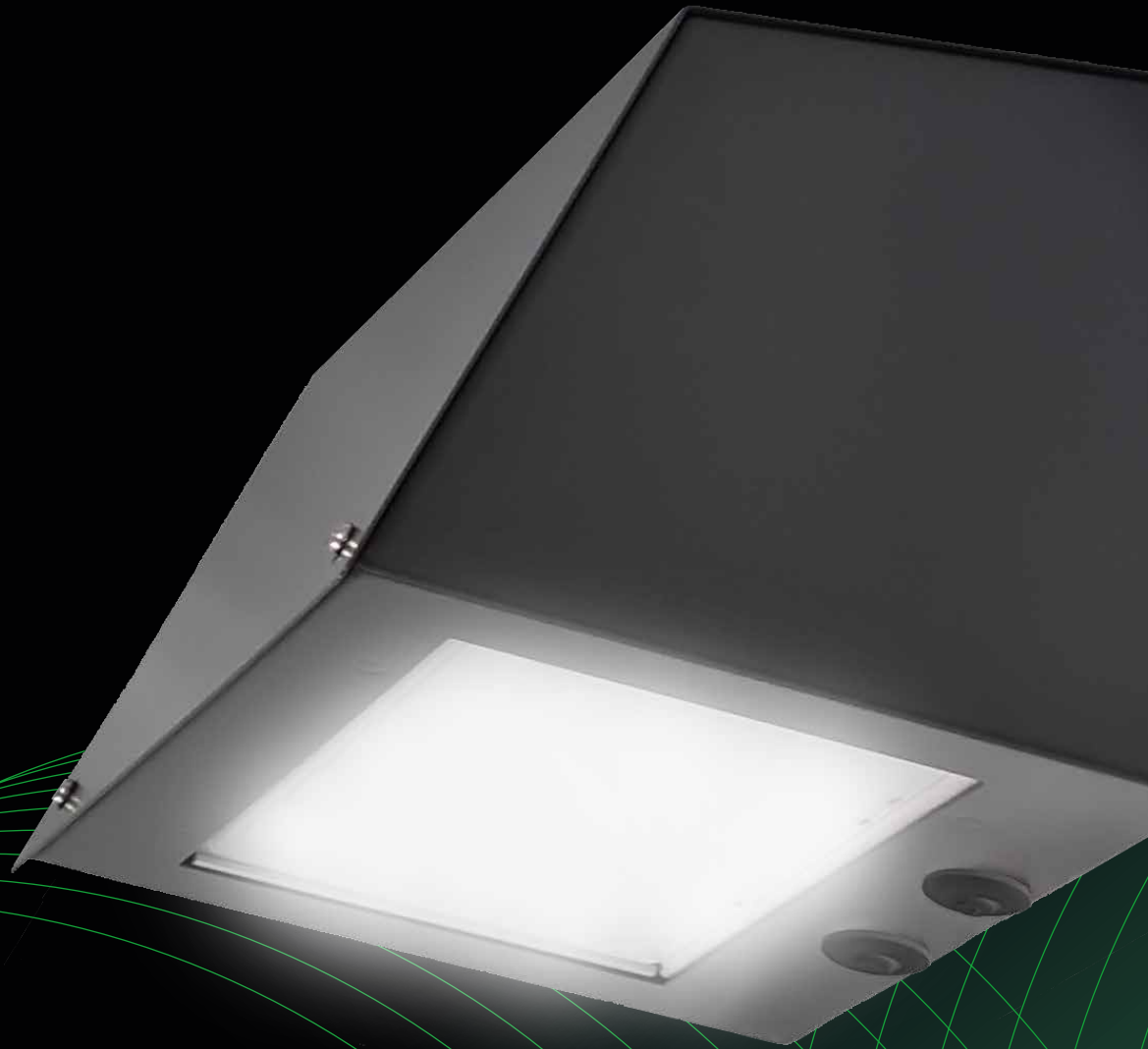


# PRO+ Wall

WALL-MOUNTED LUMINAIRE



PRO+ Wall is an elegant and functional wall-mounted luminaire ideal for public indoor and outdoor locations. PRO+ Wall illuminates the side of the wall, the yard and other areas, creating a sense of safety. The luminaire is suitable for retrofitting and it covers most of marks left by traditional luminaires.

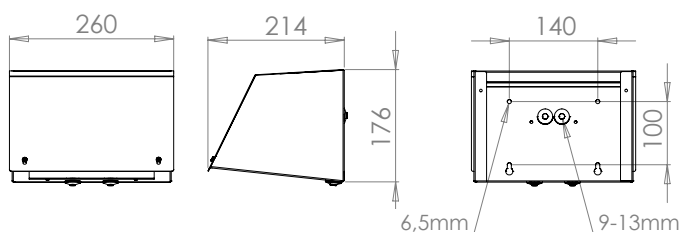
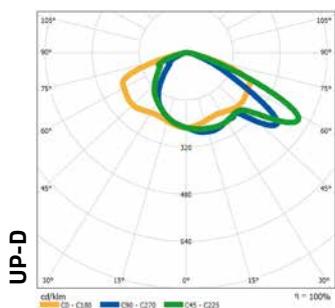
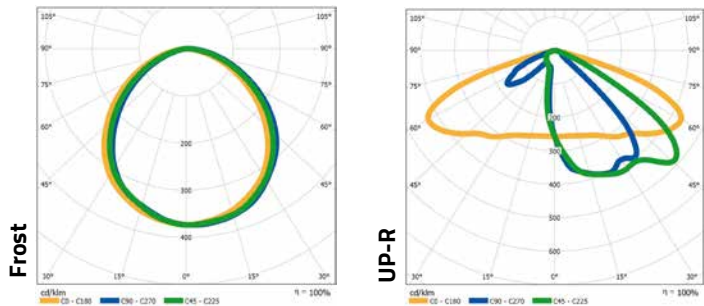
EASY  
LED

# PRO+ Wall

- luminous efficiency up to 158 lm/W
- two wiring options: from the bottom or the back of the luminaire
- directs the luminous flux downwards without illuminating the sky
- no light pollution
- ideal for mounting as a height of 2,5 m. Can be installed up to 10 m high!



## Standard opening angles



## TECHNICAL INFORMATION

<b>Housing:</b>	Luminaire anodised aluminium, housing corrosion-resistant steel (RAL 7024 Graphite Grey)
<b>Optics::</b>	Optimised, shock-resistant and UVprotected Easy LED polycarbonate optics, multiple light distribution options available. Frost, UP-D and UP-R available as standard. Wide range of street optics available for lighting an area, parking lot, road or bike path from the wall.
<b>Protection rating:</b>	Luminaire IP66
<b>Control:</b>	DALI-2 as standard (CLO, MainsDIM and Kaamos available)
<b>DALI addresses:</b>	1
<b>Temperature range (95% RH):</b>	14 W: -40°C ...+40°C 22 W: -40°C ...+35°C 29 W: -40°C ...+30°C 40 W: -40°C ...+25°C
<b>Thermal protection</b>	Automatic thermal protection with smart power level reduction
<b>Maintenance free operating life:</b>	14 W: >100kh T +25°C 22 W: >100kh T +25°C 29 W: >75kh T +25°C 40 W: >50kh T +25°C
<b>Input voltage:</b>	230 VAC (operating range: 170...264 VAC)
<b>Input frequency:</b>	50/60 Hz
<b>Luminaire protection class:</b>	CL I and CL II
<b>Remaining luminous flux after 100 000 h:</b>	>0,95
<b>Surge protection:</b>	10 kV L-GND, N-GND (EN 61000-4-5), 6 kV L-N (EN 61547)
<b>Weight</b>	3,6 kg

System power [W]:	Current [A]	Luminous Flux* [lm] Frost	Luminous Flux* [lm] UP-D	Luminous Flux* [lm] UP-R
14 W	0,08 A	2180	2320	2370
22 W	0,11 A	3440	3650	3730
29 W	0,14 A	4410	4670	4780
40 W	0,19 A	5680	6020	6160

Values shown are nominal values and are subject to +/- 10 % tolerance.  
Luminous flux for 740, dependent on choice of optical solution. For latest values, ask for light distribution files.

## PRO+ Wall circuit breaker design chart

		Number of luminaires per circuit breaker					
		Type B			Type C		
		10 A	16 A	20 A	10 A	16 A	20 A
14 W	0,08 A	6	10	13	10	16	21
24 W	0,11 A						
30 W	0,14 A						
41 W	0,19 A						

**Inrush current peak:** 53A, t = 200µs (50 % of Ipeak) **Earth leakage current:** 0,13 mA