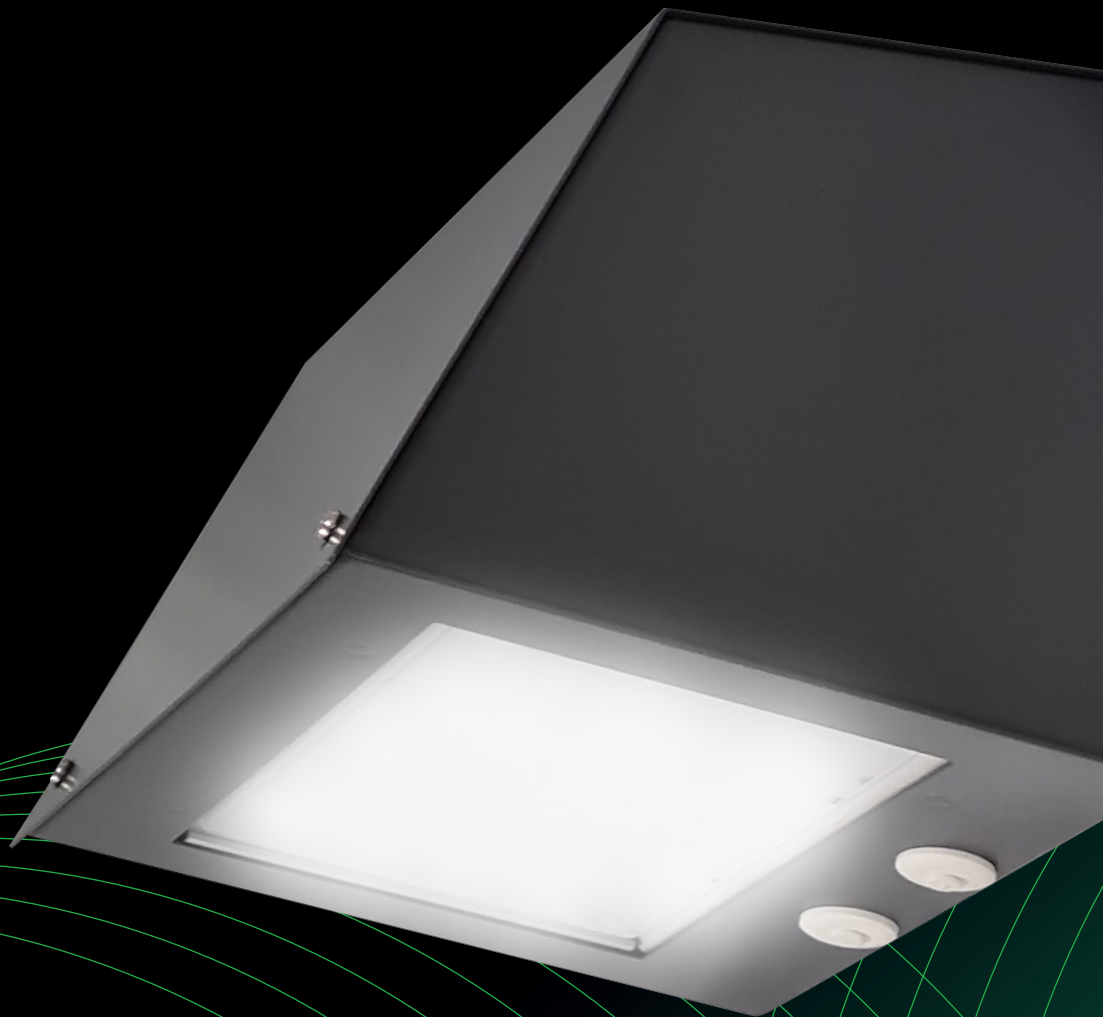


# PRO+ Wall

WALL-MOUNTED LUMINAIRE

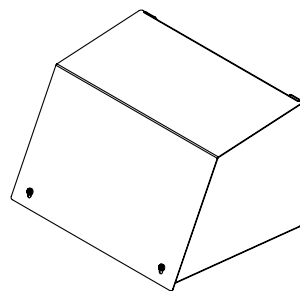
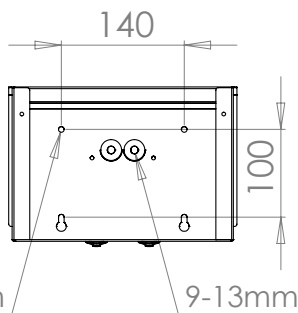
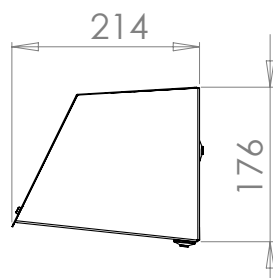
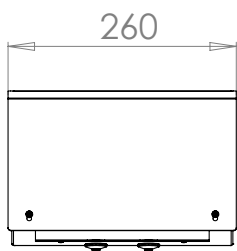


PRO+ Wall is an elegant and functional wall-mounted luminaire ideal for public indoor and outdoor locations. PRO+ Wall illuminates the side of the wall, the yard and other areas, creating a sense of safety. The luminaire is suitable for retrofitting and it covers most of marks left by traditional luminaires.

EASY  
LED

# PRO+ Wall

- luminous efficiency up to 158 lm/W
- two wiring options: from the bottom or the back of the luminaire
- directs the luminous flux downwards without illuminating the sky
- no light pollution
- ideal for mounting as a height of 2m or higher



## TECHNICAL INFORMATION

<b>Housing:</b>	Luminaire anodised aluminium, housing corrosion-resistant steel (RAL 7024 Graphite Grey)
<b>Optics:</b>	Optimised, shock-resistant and UV-protected Easy LED polycarbonate optics, multiple light distribution options available. Frost and UP-R as standard.
<b>Protection rating:</b>	Luminaire IP66
<b>Control:</b>	DALI as standard (CLO, MainsDIM and Kaamos available)
<b>DALI addresses:</b>	1
<b>Temperature range (95% RH):</b>	15 W: -40°C ...+40°C 23 W: -40°C ...+35°C 30 W: -40°C ...+30°C 41 W: -40°C ...+25°C
<b>Thermal protection:</b>	Automatic thermal protection with smart power level reduction
<b>Maintenance free operating life:</b>	15 W: >100kh T +25°C 23 W: >100kh T +25°C 30 W: >75kh T +25°C 41W: >50kh T +25°C
<b>Input voltage:</b>	230 VAC (operating range: 170...264 VAC)
<b>Input frequency:</b>	50/60 Hz
<b>Luminaire protection class:</b>	CL I
<b>Remaining luminous flux after 100 000 h:</b>	>0,95
<b>Surge protection:</b>	10 kV L-GND, N-GND (EN 61000-4-5), 6 kV L-N (EN 61547)
<b>Weight:</b>	3,6kg

System power [W]:	Current [A]	Luminous Flux* [lm] Frost	Luminous Flux* [lm] UP-R
15 W	0,08 A	2120	2310
23 W	0,11 A	3340	3630
30 W	0,14 A	4290	4650
41 W	0,19 A	5520	5990

Values shown are nominal values and are subject to +/- 10 % tolerance. Luminous flux for 740, dependent on choice of optical solution. For latest values, ask for light distribution files.

### PRO+ Wall circuit breaker design chart

		Number of luminaires per circuit breaker			
		B10	B16 A	C10 A	C16 A
PRO+ Wall	15 W	7	12	10	18
	23 W				
	30 W				
	41 W				
Inrush current peak: 53A, t = 200µs (50 % of Ipeak)		Earth leakage current: 0,13 mA			