



CANOPY LIGHT

PRO+ RR

Easy LED PRO+ RR is a bright and compact canopy light for doorways, canopies and platforms for bus or rail traffic. The luminaire is available in both surface (PRO+ RR P) and recessed (PRO+ RR U) models and suits also well for retrofitting.

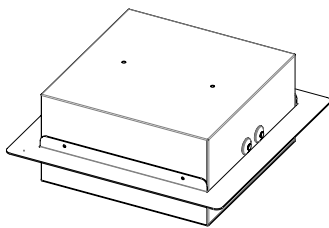
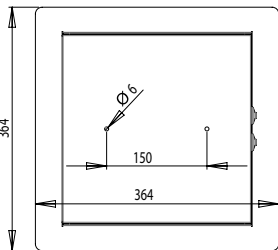
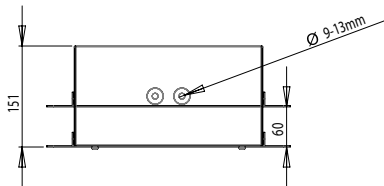
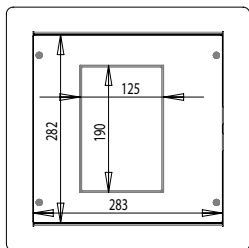
Versatile PRO+ RR is designed for outdoor and can be installed in many different structures. There is also a wide range of lenses available for different needs.

Compact PRO+ RR has a neat and inconspicuous design. Its size allows for installing into most existing mountings and mounting holes.

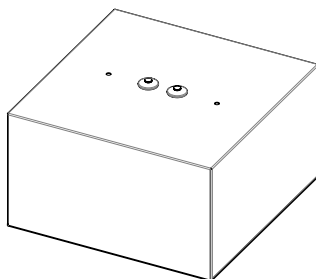
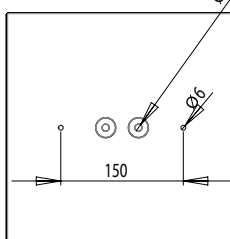
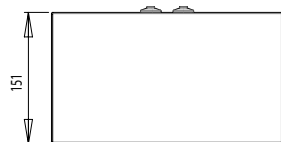
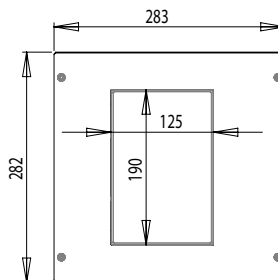
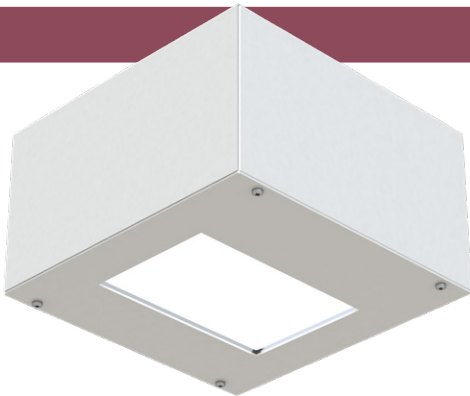
Durable PRO+ RR is built in a tough aluminum housing with a polycarbonate plate protecting the lenses. Both models also have a stainless steel installation frame.

PRO+ RR Canopy Light

PRO+ RR - U



PRO+ RR - P



Housing: Luminaire, anodized aluminum, installation frame, stainless steel (RAL 9010)

Optics: Optimized, shockproof and UV protected Easy LED polycarbonate optics, several light distribution options.

Protection rating: Driver & led module IP66

Control: Integrated DALI. CLO, MainsDIM and Kaamos available

DALI addresses: 1

Temperature range (95% RH): 15 W: -40°C ...+40°C

23 W: -40°C ...+35°C

30 W: -40°C ...+30°C

41 W: -40°C ...+25°C

Thermal protection: Automatic thermal protection with output current dimming

Maintenance free operating life: 15 W: >100kh at +25°C

23 W: >100kh at +25°C

30 W: >75kh at +25°C

41W: >50kh at +25°C

Input voltage: 230 VAC (operation voltage range 170...264 VAC)

Input frequency: 50/60 Hz

Luminaire protection class: GL I

Remaining luminous flux after 100 000 h: >0,90

Surge protection: 10 kV L-GND, N-GND (EN 61000-4-5), 6 kV L-N (EN 61547)

Weight: 6,1 kg (PRO+ RR U)

5,1 kg (PRO+ RR P)

Dimensions (LxWxH): 364 x 364 x 151 mm (PRO+ RR U)

283 x 282 x 151 mm (PRO+ RR P)

System power [W]:	Current [A]:	Luminous Flux* [lm]:
15 W	0,08 A	2120 lm
23 W	0,11 A	3340 lm
30 W	0,14 A	4280 lm
41 W	0,19 A	5520 lm

Values shown are nominal values and are subject to +/- 10% tolerance. Luminous flux for 740, dependent on choice of optical solution. For latest values, ask for light distribution files.

PRO+ RR circuit breaker design chart

		Number of luminaires per circuit breaker				
		B10	B16 A	C10 A	C16 A	
PRO+ RR	15 W	0,08 A	7	12	10	18
	23 W	0,11 A				
	30 W	0,14 A				
	41 W	0,19 A				
Inrush current peak: 53A, t = 200µs (50 % of Ipeak)		Earth leakage current: 0,13 mA				